

ANNUAL REPORT

2015-16

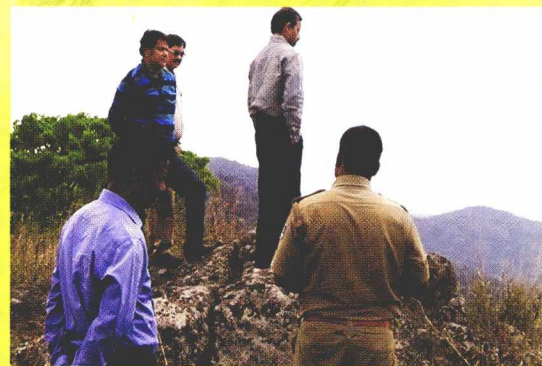
(July, 2015 to June, 2016)



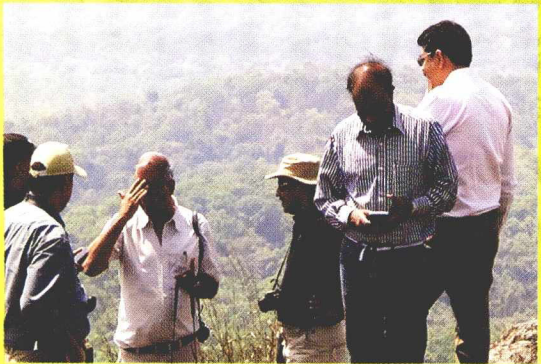
ODISHA, INDIA



PRIZE DISTRIBUTION TO STUDENTS BY HONORABLE DEPUTY SPEAKER, SHRI SANANDA MARNDI, GOVT. OF ODISHA DURING CELEBRATION OF CIRCLE LEVEL 61ST WILDLIFE WEEK AT SANKALPA HALL OF BARIPADA DIVISION, BARIPADA



PRINCIPAL SECRETARY FOREST AND ENVIRONMENT DEPARTMENT, GOVT. OF ODISHA HAVING OVERVIEW OF THE TIGER RESERVE FROM MEGHASANI HILL



PRINCIPAL CHIEF CONSERVATOR OF FORESTS (WL) AND CHIEF WILDLIFE WARDEN, ODISHA HAVING DISCUSSION WITH THE GROUP OF TIGER EXPERT LEAD BY DR. K. ULLAS KARANTH, DIRECTOR FOR SCIENCE-ASIA, WILDLIFE CONSERVATION SOCIETY.



AIG, NTCA CENTRAL REGION NAGPUR VISITED SIMILIPAL TIGER RESERVE



AT MEGHASANI HILL DURING FIELD VISIT OF DFOS, WILDLIFE OF THE STATE LEAD BY PRINCIPAL CHIEF CONSERVATOR OF FORESTS(WL) AND CHIEF WILDLIFE WARDEN, ODISHA.



PRINCIPAL SECRETARY FOREST AND ENVIRONMENT DEPARTMENT, GOVT. OF ODISHA, PCCF & HoFF, ODISHA AND PCCF (WL) & CWLW, ODISHA REVIEWING THE RELOCATION WORK OF STR



ADDITIONAL P.C.C.F., ME & IV, OTO THE PCCF, ODISHA REVIEWING THE PROGRESS OF WORK IN BARIPADA CIRCLE IN THE CONFERENCE HALL OF RCCF, BARIPADA.



CAPACITY BUILDING OF BIRDING GROUP STAFF OF SIMILIPAL TIGER RESERVE UNDER THE GUIDANCE OF SHRI S. K. MISHRA, IFS(RTD.) AND SHRI PRAMOD KU. DHALA, BIRD EXPERT.



CONTENTS

01. Field Director's Desk	03
02. Organogram	04
03. Protection Activities	05-12
• Anti-poaching camps	05
• Hejje e-patrolling.	05
• Special Tiger Protection Force (STPF)	06
• Core-buffer joint patrolling.	06
• Akhand Shikar	07
• Monsoon Patrolling	08
• Informer network	08
• Busting of rackets	08
• Apprehending hunter dogs	08
• Core within the core	08
• Regulation on use of roads inside sanctuary	09
• Ban on entry of Insecticides	09
• Ring vaccination of dogs against canine distemper.	09
• Awareness Programme.	10-11
• Achievements in Protection	11
04. Human Resource	12
• New incumbents	
05. Relocation of villages from the core area of Similipal Tiger Reserve.	12-15
• Relocation of Jamunagarh village to Nabra near Udala.	12-13
• Relocation of Kabatghai village to Manada near Jashipur.	13-14
06. Eco-Tourism	
• New Initiatives	15
• Visitor Profile	16
• Devkund	16
• Ramtirtha	17
• Similipal Ecotourism Society	17
07. Friends of Similipal Tigers	18
08. Habitat Management in Similipal Tiger Reserve.	18-21
• Meadow Management.	18
• Biomass Management by Segment cutting of grass.	19
• Collection of palatable seeds.	19
• Uprooting of weeds before flowering and fruiting periods.	20
• Control of woody species in meadows.	20
• Provision of Irrigation system to meadows.	20
• Forest Fire.	20

09. Allotment & Expenditure in 2015-16.	22
10. Developmental Activities.	22-26
11. Mobile Veterinary Service (MVS).	26
• Elephant calf under Rehabilitation process at Temporary Relocation centre, Pithabata (WL) Range.	27
12. Rescue and Release of Wild Animal.	27-30
13. Staff Welfare.	30
14. Phase-IV Tiger Monitoring.	31
• Monitoring through Carnivore Signs Survey.	31
• Monitoring of Prey Population.	31
15. All Odisha Tiger Census.	34
16. GIS Laboratory Achievement.	35
17. Crocodile Census.	35
18. Elephant Census.	37
19. Man-elephant interference in 2015-16.	37
20. Inter-State movement of Elephant	38
21. Death of Elephant during 2015-16.	38
22. Capacity Building.	40-43
• Botanisation programme	40
• Training on meadow management	40
• Training programme for All Odisha Tiger Estimation	41
• Forest Law Training	41
• Rescue Training	42
• Exposure visits to other Tiger Reserve by frontline staff.	43
23. Eco Development Activity.	45
24. Identity Cards for Similipal Villagers.	45
25. Involvement of Non-Government Organizations.	46
• SANGRAM.	46
• Indian Grameen Services.	46
• Wildlife Trust of India.	46
• Gram Vikas.	46
• TRAFFIC India.	46
26. Research Activities.	47
• Research Publications.	47

* * *

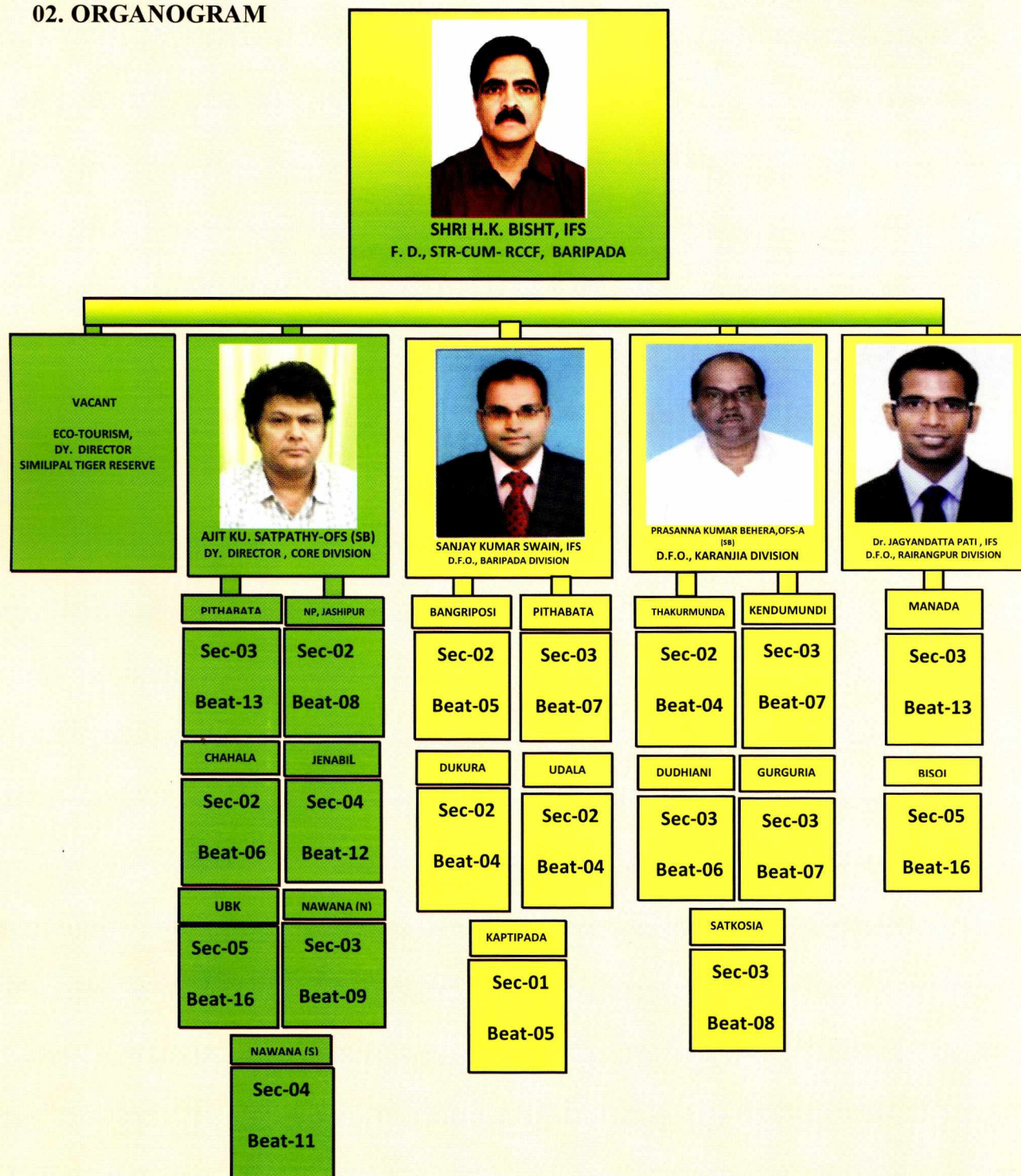
01.FROM THE DESK OF FIELD DIRECTOR



This Annual report is compilation of the important activities carried out during the year (July-2015 to June-2016) in Similipal Tiger Reserve. Major thrust was given to provide effective measures to conserve wild animals and their habitat by improving the meadows and removing the invasive weeds. For strengthening the protection and monitoring of wildlife a new initiative through Hejje e-patrolling system was introduced. The relocation of two villages from the core area and providing the villagers better opportunities of socio-economic development outside, has given additional area for wildlife. To control the spread of contagious diseases like anthrax, wide spread immunization of cattle is going on. Emphasis given for an effective and quick rescue of strayed or injured wild animals and releasing the same back to forest, Eco-tourism infrastructure, capacity building of staff and creating awareness among school children and general public by organizing different programme like rally, meetings, Palas, competition etc. It will also serve as an important database for reference to wildlife managers, conservationist and researchers being a repository of all major events in Similipal during this period. We will also welcome comments and ideas for better wildlife management and conservation of the Tiger Reserve.

(Shri H. K. Bisht, IFS)
Field Director, Similipal Tiger Reserve-
cum-Regional CCF, Baripada

02. ORGANOGRAM



03. PROTECTION ACTIVITIES.

3.1. Anti-poaching camps.

94 anti-poaching camps (63 in core and 31 in buffer area) are operating in Similipal Tiger Reserve. During the year additional 07 camps have been established at strategic locations vulnerable to poaching namely Chha number, Ghagra, Bisipur, Bhadrargarh, Pandabandh, Ramjodi, Sadananda. Each camp is managed by one regular staff, one Forester or Forest Guard who is assisted by 6 daily wage protection assistants. They are patrolling daily along footpaths and roads in vulnerable areas. The patrolling detail is recorded in *Daily patrolling Register* and communicated to the Office of Field Director through VHF communication for record and monitoring every day.



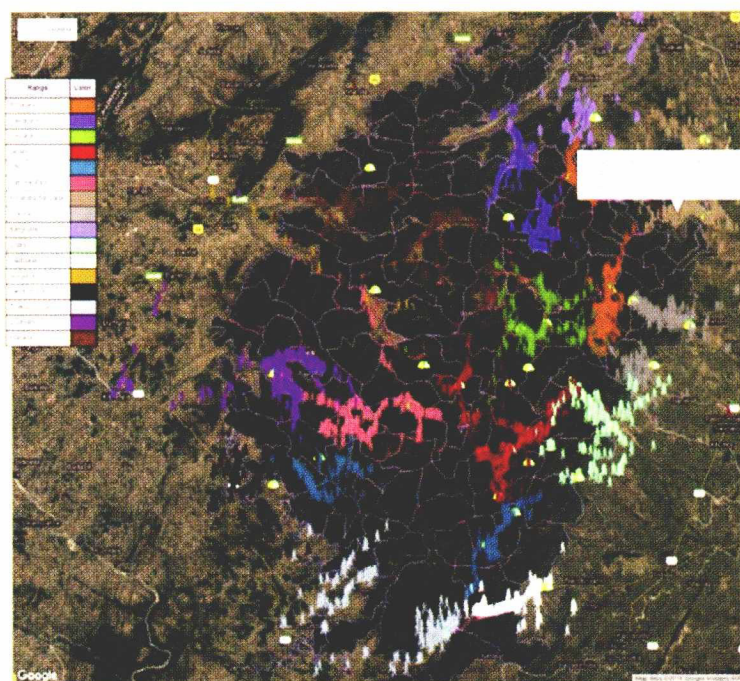
PERMANENT ANTIPOACHING CAMP AT GHAGRA



INAUGURATION OF PERMANENT ANTIPOACHING

3.2 Hejje e-Patrolling.

Hejje e-patrolling has been introduced on pilot scale in 39 anti-poaching camps of 18 Ranges to monitor day to day foot patrolling, strengthening the overall protection and conservation of the forests and wildlife.



EFFECTIVE HABITAT MONITORING WITH THE HELP OF HEJJE E. PATROLLING SYSTEM.

3.3 Special Tiger Protection Force (STPF).

One Range officer, 2 Deputy Rangers and 59 nos. of Tiger Forest Guards are in position at three base camps like Bhanjabasa of UBK Range covering Podadiha and Dangadiha area of Baripada and Karanjia Division, Hatighar base camp of Jenabil Range covering Udala, Baniabasa, Bahalda area of Baripada Divisions and Gudgudia base camp covering Gudgudia, Talbandh area of Karanjia and Rairangpur Division. Vulnerable locations inside and at periphery of Similipal Tiger Reserve are jointly patrolled to combat poaching & smuggling activities with the regular staff. Monthly performance report is submitted to NTCA regularly.

The STPF Forest Guards brought on deputation have been returned to their respective Division cadre and 59nos. of Forest Guards who were newly recruited against deputation vacancy have joined in STPF.



REVIEWING OF STPF AT BHANJABASA BY PCCF WL ODISHA

3.4 Core-buffer joint Patrolling.

Joint patrolling is conducted frequently where both core and buffer staff participate. The 19 Ranges of STR have been divided into 5 landscapes for the purpose. Interactive meeting were held at Circle, Division and field level for better coordination.



CORE BUFFER COORDINATION MEETING FOR CHECKING AKHAND SHIKAR ON 2.11.2015.

3.5 Akhand Shikar.

This is a traditional way of ritual mass hunting practice adopted by tribals living in and around Similipal. The period usually stretches from *Makar Sankranti* in January to *Raja Sankranti* in June though peak period is around *Vishubha Sankranti* in April. During this period, in seven occasions the attempts were made for Akhand shikar but were successfully prevented except one occasion. Following measures were undertaken during the period.

- Joint flag march and combing operation at regular intervals by core, buffer and police personnel/staff in vulnerable villages and routes in association with Hon. Wildlife Wardens were conducted.
- Movement of suspected poachers in sensitive villages were monitored with the help of intelligence network.
- Awareness programs were conducted among villagers of periphery areas in co-ordination with NGOs.
- Football and Archery competition were organized on the eve of *Vishubha Sankranti* among tribal of sensitive villages to dissuade the people from mass hunting practice.
- Holding of coordination meetings with District Administration and Police authority
- Awareness through traditional folklore (Pala) in villages in and around Similipal Tiger Reserve has been organized with the help of SANGRAM NGO for preventing Akhand Shikar and cooperation.
- Padayatras in different villages in and around Similipal Tiger Reserve were organized for preventing Akhand Shikar.



ARCHERY COMPETITION ORGANIZED TO DISUADE THE PRACTICE OF AKHAND SHIKAR ON THE EVE OF MAHA VISHUBA SANKRANTI AMONG TRIBALS IN SENSITIVE BUFFER RANGES.



AWARENESS THROUGH PADA YATRA ORGANISED IN VILLAGES FOR PREVENTION OF AKHAND SHIKAR AND FOREST FIRE, RAIRANGPUR DIVISION.



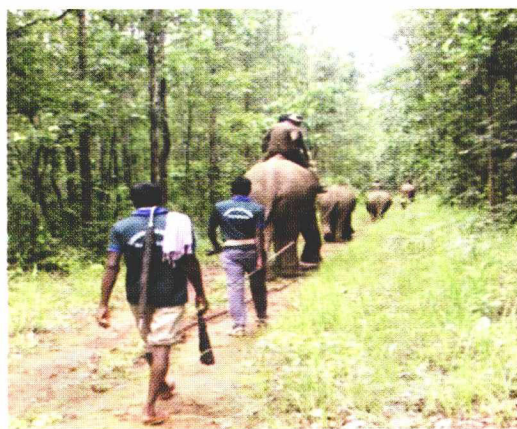
ORGANISING AWARENESS MEETING FOR PREVENTION OF AKHAND SHIKAR IN AROUND SIMILIPAL TIGER RESERVE.



AWARENESS THROUGH PALA FOR PREVENTION OF AKHAND SHIKAR.

3.6 Monsoon patrolling.

Special strategies were adopted during monsoon for preventing poaching and tree felling. In addition to foot patrolling, difficult areas were covered with the help of captive elephants. The frontline staffs of all 19 Tiger reserve Ranges were pooled in groups for monsoon patrolling in vulnerable spots of the Reserve.



MONSOON PATROLLING IN ELEPHANT, SIMILIPAL TIGER RESERVE

3.7 Informer network.

Informer network in Similipal was strengthened with support from local people and NGOs by which advance information were received about illegal activity which has helped in prevention of wildlife crime and nabbing the culprits.

3.8 Busting of rackets.

One no. of leopard skin, wild boar skin, deer skull and horn were seized during the period and total 131 persons were arrested in Similipal Tiger Reserve.

3.9. Core within the Core.

A portion of the core zone, about 350 km² area consisting of part of Upper Barakamuda, Jenabil and National Park Ranges is continued to be treated as “**Core within the Core**” to keep the breeding habitat of tigers absolutely inviolate. In this ‘No – Go’ area, restrictions have been imposed on movement of all vehicles including departmental vehicles except for exigencies of protection. Research activities and movement of outside people have also been restricted in this area.

3.10. Regulation on use of roads inside sanctuary.

Regulation have been imposed on movement of villagers inside the tiger reserve in important footpaths/ roads which are passing through critical tiger habitat and were being used by the villagers regularly to commute to outside the reserve since long.

3.11 Ban on entry of Insecticides.

The ban on entry of insecticides i.e. Themate and Mono-crotophus to Sanctuary continued to be imposed.

3.12. Ring Vaccination of dogs against Canine Distemper in the fringe villages around Similipal Tiger Reserve.

The Canine Distemper disease is considered as new threats to Big cats which is common in domesticated dogs, the virus causing the disease spreading to new regions and causing mortality in tigers as well as several wildlife species.

Considering the threats, Similipal Tiger Reserve authority also decided to start the Ring Vaccination in fringe villages in dog population for the first time in buffer areas of Similipal Tiger Reserve. In the first phase 1067 numbers of dogs have been vaccinated in three Ranges and work is in progress.



PREVENTION OF SPREAD OF CANINE DISTEMPER VIRUSES DISEASE TO WILD ANIMALS LIKE HYENA, JACKALE, CATS ETC. THROUGH DOMESTIC DOGS BY PROVIDING VACCINATION OF CANINE DISTEMPERTO DOGS IN AND AROUND SIMILIPAL TIGER RESERVE.

3.13 Awareness Programme.

i. Observation of 61th Wildlife Week at Baripada by Similipal Tiger Reserve.

Similipal Tiger Reserve, Baripada organised 61st Wildlife Week on 05.10.2015 at Sankalp conference hall Baripada. Hon'ble Deputy Speaker of the Odisha Legislative Assembly, Odisha was the Chief Guest of this meeting. The Field Director, Similipal Tiger Reserve-cum-Regional Chief Conservator of Forests, Baripada presided over this meeting and the Deputy Director, Similipal Tiger Reserve welcomed all participants. The Divisional Forest Officer, Karanjia, Divisional Forest Officer, Baripada, Divisional Forest Officer, Rairangpur addressed on protection and conservation of wildlife. The Ex- Honorary wildlife Warden S. Vanoomitra Acharya, Miss Sanjukta Basa, Ex-MP, S. Birabhadra Singh, Eco-Club teachers of various schools with school students were present in this meeting. A wildlife based quiz competition was held among the students of 13 nos. Schools to promote and create awareness on conservation and preservation of wildlife. The Chief Guest awarded Sub-Divisional level Biju Patnaik award for wildlife conservation to Sri Ajit Kumar Mohanta of village-Phuljhari for Baripada Sub-Division, Sri Krushna Chandra Gochhayat of village-Dukura for Kaptipada Sub-Division and Sri Laxman Charan Mohanta of village-Chhanua for Bamanghati Sub-Division. In Quiz competition, the students of MPK Girls School stood 1st and students of St. Anne's Convent School stood 2nd and student of Saraswati Sishu Vidya Mandir, Tulasichaura stood 3rd position.



A WILDLIFE BASED QUIZ COMPETITION WAS ORGANISED AMONG THE STUDENTS OF SCHOOLS TO PROMOTE AND CREATE AWARENESS FOR CONSERVATION AND PRESERVATION OF WILDLIFE DURING CELEBRATION OF CIRCLE LEVEL 61ST WILDLIFE WEEK AT SANKALPA HALL OF BARIPADA. DIVISION, BARIPADA.

ii. World Elephant day.

World elephant day was celebrated on 12.08.2015 in the Conference Hall of the Field Director, Similipal Tiger Reserve-cum-Regional Chief Conservator of Forests, Baripada. The Field Director, Similipal Tiger Reserve-cum-Regional Chief conservator of Forests, Baripada, Divisional Forest Officer, Baripada Division, the Deputy Director, Similipal Tiger Reserve, Baripada, the Asst. Conservator of Forests of Similipal Tiger Reserve and Baripada Division. The Forest Range Officers, Vanoomitra Acharya, Miss Sanjukta Basa, NGO SANGRAM, Eco Club teachers, High Schools students from different Schools of Baripada participated. The Field Director, Similipal Tiger Reserve deliberated on importance of the elephant conservation and biodiversity conservation. Some students from different School deliberated their talk related to ecology, man-elephant conflict, threat to elephant, protection measure and some beautiful stories related to elephant. Since last seven years the interstate migration of elephants in the Mayurbhanj Elephant Reserve is causing a serious concern about man-animal conflict. The Field Director, Similipal Tiger Reserve-cum-RCCF, Baripada summarized about the challenges faced for protection and conservation of elephants and different mitigation measures and strategy required.



CELEBRATION OF WORLD ELEPHANT DAY BY SIMILIPAL TIGER RESERVE

3.14 Achievements in Protection.

Division	Total No. of cases detected			No. of persons arrested	Important seizures made			
	OR	UD	Total		Gun	Important Wildlife trophies	Vehicle	Timber in Cum
Baripada	1239	500	1739	85	26 (Thusa)	Mouse deer skin – 1 no. B. deer skull with horn – 1 no. Wild boar skin – 1 no. Sambar horn – 1 no. Elephant tush – 1 no.	26 nos. motorized vehicle	Timber – 36.790 cum. Pole – 147 nos. Firewood – 61.61 MT.
Karanjia	14	22	36	1	13	Elephant tush – 2 nos. One barking deer	-	2.32 cum.
Rairangpur	442	31	474	42	-	Giant squirrel meat – 300gr. Wild pig fresh meat – 200 gr. Elephant Tusk – 2 nos. Leopard Skin -1no.	Bicycle – 3 nos. Bike (2 wheeler) – 1 no. Auto (3 wheeler) – 1 no. Pickup van – 1 no. Tractor – 1 no. Truck – 3 nos.	29.083 cum
STR	02	73	75	03	07	Tush-4 nos. Tusk – 2 nos. Bison Horn – 2 nos.	-	2.92250 cum
Total	1697	626	2324	131	46			

04. HUMAN RESOURCE.

New incumbents.

1. Sri Prasanna Kumar Behera, OFS(SB), joined on 19.10.2015 as Divisional Forest Officer, Karanjia Division after relieving Sri Ashish Behera, OFS(SB) .
2. Sri Jagyandatt Pati, IFS joined on 07.06.2016 as Divisional Forest Officer, Rairangpur Division after relieving Sri Arun Kumar Swain, OFS (SB).
3. Sri Arun Kumar Das, Forest Ranger joined on 25.04.2016 as Tiger Force Range Officer.
4. Sri Kirtiranjana Parida, ACF, I/ C UBK Range joined on 23.05.2016 as ACF STR Core Division.
5. Sri Arun Kumar Biswal, A.C.F, Join on 05.08.2015 as A.C.F., Office of the Field Director, Similipal Tiger Reserve-cum-RCCF, Baripada.
6. Sri Pradeep Kumar Bhoi, Forest Ranger, Joined on 01.01.2016 as Range Officer, Chahala Range.

05. RELOCATION OF VILLAGES FROM THE CORE AREA OF STR.

A well planned Relocation and Resettlement plan implemented successfully by Similipal Tiger Reserve and District Administration. Two villages from core area were relocated outside the Tiger Reserve.

1. RELOCATION OF 35 FAMILIES OF JAMUNAGARH VILLAGE ON 09.09.2015.

- The villagers of Jamunagarh Village had submitted application dt.17.06.2014 for their willingness for relocation from the core area of Similipal Tiger Reserve.
- Family survey was jointly conducted by Revenue officials, Forest officials, Gram Panchayat Members and Sangram, NGO where 35 families were identified among the families who have given their option for R&R package-I in above Palli Sabha as per guidelines of NTCA.
- It was decided in the District Level Meeting for Rehabilitation and Resettlement of village Jamunagarh held on 26.12.2014 to resettle them at Nabra (Bahubandha) under Udala Tahasil. Each family was to be provided with 10 Decimal homestead land and one house under IAY/Biju Pucca Ghar Yojana scheme of State Govt. by District Administration at resettled village. Only three nos. families who did not opt any option of NTCA relocation package are yet to be relocated.
- 35 families of Jamunagarh village were shifted to the resettlement site at Nabra (Bahubandha) on 09.09.2015.
- 10 decimal homestead land allotted to each family. The package amount of Rs.350.00 lakh @ Rs.10.00 lakh to each family have been provided out of the fund allotted under CAMPA (W.L) and kept in Saving Bank of United Bank of India, Udala Branch.
- One tube-well has been installed near the temporary Colony by RWSS, Mayurbhanj.
- Health and Anganwadi facilities are being provided to the villagers. Day to day post-relocation monitoring is being done by a Sub-divisional Committee headed by the Sub-collector, Kaptipada.
- Cooked foods were provided initially for seven days and extended up to 24.09.2015 and free dry ration provided for next two months.
- Four Solar street lights have been installed in the temporary Colony.
- Mosquito net, solar lantern and other items like bucket ,lantern, saree, towel, lungi, kitchen set, bed sheets ,tarpaulin from Red Cross Society have been provided to each family.
- Village Development Committee has been formed.
- 02 SHGs formed and capacity building started for livelihood options.



RELOCATION OF 35 FAMILIES OF JAMUNAGARH VILLAGE ON
09.09.2015.



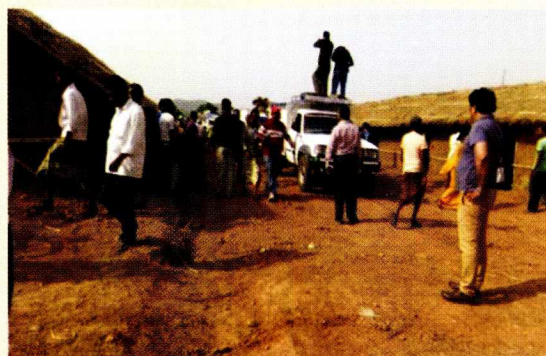
PATTA GIVEN BY TAHASILDAR TO RELOCATED FAMILY OF
JAMUNAGAR AT NABRA REHABILITATION COLONY

2. RELOCATION OF 47 FAMILIES OF KABATGHAI VILLAGE ON 28.05.2016.

- The villagers of Kabatghai Village had submitted application dt.20.02.2016 expressing their voluntary willingness for relocation from the core area of Similpal Tiger Reserve.
- Gram Sabha was held on 21.03.2016 under the chairmanship of Basanti Murmu, Ward Member of Kabatghai where the villagers of Kabatghai have given their consent to be relocated from the core area of Similpal Tiger Reserve & opted to avail Option-I package as per guideline of NTCA, New Delhi.
- Then in coordination with District Administration the process of their relocation was initiated. The matter was discussed in the District Level Implementing Committee meeting held on 30.03.2016.
- Family survey was jointly conducted by Revenue officials, Forest officials, Gram Panchayat Members and Sangram, NGO where 47 families were identified.
- The villagers of Kabatghai has opted village Manada for their resettlement. It is decided in the Rehabilitation and resettlement meeting held on 27.04.2016 to resettle them at Manada near Jashipur. Each family will be provided with 10 Decimal homestead land at Manada.
- 47 families of Kabatghai village were shifted to the resettlement site at Manada on 28.05.2016.
- They are at present staying in temporary thatched & bamboo mud house in the new site and will stay there till completion of their houses.
- The package amount of Rs.470.00 lakh @ Rs.10.00 lakh to each family have been provided out of the fund allotted under CAMPA (W.L) in Saving Bank of Bank of India, Jashipur Branch.
- One tube-well has been installed near the temporary Colony by RWSS, Mayurbhanj.
- Health and Anganwadi facilities are being provided to the villagers.
- Day to day post-relocation monitoring is being done by a Sub-divisional Committee headed by the Sub-collector, Panchpir, Karanjia.
- Cooked foods were provided initially for 20 days. Eight Solar street lights have been installed in the temporary Colony & 47 solar Lanterns supplied to 47 families.
- Mosquito net, lantern and other items like bucket , saree, towel, lungi, kitchen set, bed sheets ,tarpaulin from Red Cross Society have been provided to each family.
- Each family will be provided house under Biju Pacca Ghar Scheme.
- 14 Children have been admitted in English Medium School under Urban Education Programme at Karanjia with residential facilities.



GRAM SABHA FOR CONSENT AND OPTION HELD ON 21.03.2016
IN KABATGHAI VILLAGE



47 FAMILIES OF KABATGHAI VILLAGE RELOCATED ON 28.05.2016 AT
MANDA NEAR JASHIPUR.

06. ECO-TOURISM

New Initiatives

- 1 One number double bedded Bamboo Cottage has been provided at Kumari.
- 2 Entry Gate and interpretation structure constructed at Pithabata.



ENTRY GATE AND INTERPRETATION STRUCTURE AT PITHABATA

- 3 Restaurant constructed at Jamuani Eco-tourism complex.
- 4 Electricity facility provided to Eco-tourism Complex at Jamuani.
- 5 Spring water brought through pipe utilizing gravity to supply regular water to establishment at Chahala including irrigation of meadow.
- 6 Toilet facilities provided to tourist at Chahala, Bareipani, Joronda & Ramatirtha.
- 7 Monitoring Watch Tower facility provided at Chahala.
- 8 Booking counter renovated at Ramtirtha.



RESTAURANT AT JAMUANI ECO-TOURISM COMPLEX



BOOKING COUNTER, RAMTIRTHA



BAMBOO COTTAGE AT KUMARI TOURISM COMPLEX

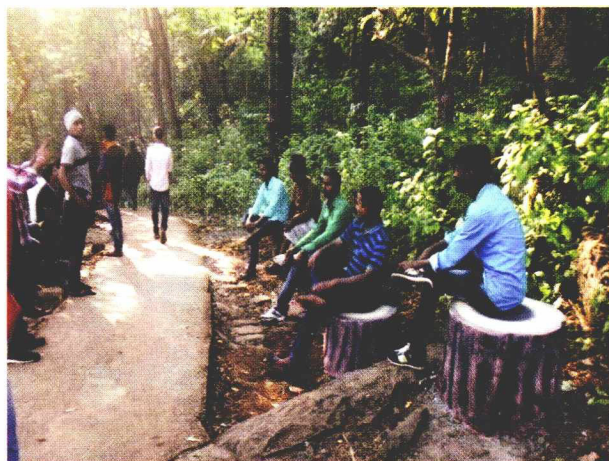
6.1. Visitor Profile.

Year	Indian	Foreigner	Total	Revenue collected
2011-12	13709	83	13792	13,36,450
2012-13	24452	43	24495	20,06,642
2013-14	23900	29	23929	23,37,250
2014-15	25437	22	25459	37,25,342
2015-16	30422	09	30431	38,44,530

Devkund

Basic amenities like water supply, toilet, sit outs, dustbins, souvenir shop have been developed and battery operated autorikshaw has been provided. Eco Tourism Group of EDCs are managing the day tourists with the help of Forest Department and District Administration.

1,17,709 tourists visited the scenic spot having religious significance situated in the buffer area of Similipal Tiger Reserve during the year, 2015-16. Revenue to the tune of 4,17,900/- was earned towards entry fee of 7564 nos. of vehicle.



SIT OUT AT DEVKUND



STONE SIT OUT AT DEVKUND

Ramtirtha.

55284 nos. day tourists visited during the year-2015-16. Entry Fee for Rs.1,16,485/-, parking Fee for Rs.15,100/- & picnic fee for Rs.30,900/- collected from tourists at Ramtirtha during the year, 2015-16.



RIVER VIEW OF KHAIRI-BHANDAN RIVER AT RAMTIRTHA

Similpal Eco-tourism Society.

13th General Body Meeting & 14th General Body Meeting of Similpal Eco-tourism Society was held on 22.07.15 & 12.11.2015 respectively at the conference hall of F.D., STR –cum- RCCF, Baripada under the Chairmanship of Field Director, STR-cum-RCCF, Baripada.

The income of the Similpal Eco-tourism Society during 2015-16 was Rs.31,74,058/- and source was mainly from entry fee, accommodation charges and Bank interest. An amount of Rs.55,15,653/- was available with SES at the end of 30th June, 2016, An amount of Rs.53,85,752/- was spent during 2015-16 for different tourism activities and purposes like construction of toilet facilities, pipe water supply at Chahala, construction of restaurant at Jamuani tourism complex, supply of

Similipal Tiger Reserve, Mayurbhanj, Odisha

electricity at Jamuani Eco-tourism complex, purchase of three nos tents for Jamuani Eco-tourism complex, construction of Pithabata check gate and interpretation structure, some major repair of rooms of Gudgudia, Ramtirtha and Jamuani complexes were undertaken.

07. FRIENDS OF SIMILIPAL TIGERS.

This programme was started in July 2012 to create a group of volunteers among school and college around the Similipal Tiger Reserve.

- 57 nos. of high schools and 13no. of colleges are involved in this programme.
- Two nature camps were organized at Chahala on 22.03.2016 and 27.03.2016 respectively where 34 volunteers of Friends of Similipal Tigers along with 2 nos. of teachers participated.



AWARENESS PROGRAMME AMONG THE SCHOOL CHILDREN-FIELD VISIT OF 'FRIENDS OF SIMILIPAL TIGERS' TO SIMILIPAL TIGER RESERVE

08. HABITAT MANAGEMENT IN SIMILIPAL TIGER RESERVE.

8.1 Meadow Management.

Previously in Similipal, the only traditional way of meadow maintenance practiced was control burning. Although control burning helps in getting the new growth of grasses, but frequent burning causes a lot of bad effects on grassland ecosystem. For the first time this year a meadow management scheme was developed and practice of control burning of meadows was totally abandoned and systematic cutting of grasses was introduced.



CUTTING OF GRASSES FOR MEADOW DEVELOPMENT.



CUTTING OF GRASSES FOR MEADOW DEVELOPMENT

8.2 Biomass management by segment cutting of grasses.

To maintain the biomass of the habitat, the tall older grasses are cut in alternate segments. The distance between two cutting segment is about 15 to 20 mtr. depending upon the meadow area. The cut grasses are arranged in rows. The cut segments provide succulent fodder for herbivores and the uncut segments of grasses provide breeding habitat and shelter for wild animals like birds, rodents etc and ambush cover for predators. The practice of cutting of grasses instead of burning will provide sustainable habitat by conserving the soil fertility and water regime.



MEADOW MANAGEMENT WORK-SEGMENT CUTTING OF GRASSLAND



AFTER SEGMENT CUTTING OF GRASSLAND

8.3 Collection of palatable seeds.

Seeds of palatable grasses available inside the Tiger Reserve are collected to improve the fodder.

Native palatable, perennial grass seeds like *Setaria pumila*, *Bothriochloa bladhii*, *Themeda laxa* etc. are collected from the meadows. Seeds are collected in polythene bags. Then after proper sun dry, grass seeds are kept in shade. Seeds storage is done in shady places where free aeration is present.

8.4 Uprooting of weeds before flowering and fruiting periods.

There are many non-palatable and invasive weeds present in the meadows, such as *Ageratum conyzoides*, *Senna tora*, *Chromolaena odorata*, *Elephantopus scaber*, *Lantana camara* etc. These weed species are uprooted before flowering and fruiting period during monsoon by the well trained workers wearing leech guards .



WEED CLEARANCE FROM THE MEADOW OF SIMILIPAL TIGER RESERVE



WEED CLEARANCE FROM THE JENABIL MEADOW OF SIMILIPAL TIGER RESERVE

8.5 Control of woody species in meadows.

In some meadows of UBK Range, stunted growth of tree species sapling is observed encroaching the meadows, such as *Shorea robusta*, *Syzygium cerasoides* and *Dillenia pentagyna* etc. These woody plants are cleared by uprooting or by cutting followed by splitting of remaining stump, in order to prevent conversion of meadows in to bushy woody forest.

8.6 Provision of irrigation to meadows.

Keeping in view of very limited number of meadows, the existing meadows are to be optimally used by the wild animals. At Chahala, the provision of irrigation to meadows is made available through sprinklers utilizing the gravity flow of water.



PROVISION OF IRRIGATION TO MEADOW THROUGH SPRINKLERS AT CHAHALA MEADOW

8.7 Forest Fire.

Forest fire still continues to be one of the major threats to forests and animals. The forest is often set on fire by the nearby villagers during the summer season particularly from February to June for collecting NTFP for getting better flush of grasses and poaching etc. Sometimes it spreads and destroys vast tracts of valuable forests. Different steps have been made to control the fire in Similipal.

- Seven Vehicles deployed for 4 months with 70 fire watchers at vulnerable locations.



FIRE PROTECTION SQUAD EQUIPPED WITH THE NECESSARY FIRE PROTECTION GEARS AND VEHICLES
KARANJIA, KARANJIA DIVISION

- 11 nos. of Air blower machines supplied for clearing the leaf litter from the fire lines, road side etc.



FIRE PROTECTION SQUAD EXINTINGUISHING THE FORESTFIRE WITH THE HELP OF BLOWERS, SIMILIPAL TIGER RESERVE



FOEST FIRE BEING EXTINGUISHED BY FIRE PROTECTION SQUAD USING WATER SPRAYER IN DUKURA RANGE, BARIPADA DIVISION

- In 2015-16 Total 479.11ha has been affected by forest fire in core and buffer area of Similipal Tiger Reserve. In many places forest fire was extinguished promptly and larger tract of the Reserve was thus prevented for further spread of fire.
- Awareness programme was conducted to get the support of local people in and around Similipal Tiger Reserve. "Pala", meetings with local people, public representative and NGOs etc were organized.



DFO KARANJIA ADDRESSING THE GROUP OF VILLAGERS FOR PREVENTION AND CHECKING THE FOREST FIRE AND AKHAND SHIKAR IN RUGUDI SAHI, KARANJIA DIVISION

09. ALLOTMENT & EXPENDITURE IN 2015-16.

Scheme	Allotment released in Lakh Rs.	Expenditure in Lakh Rs.
CSP-Project Tiger	66395600.00	63466749.00
Non-plan	1083000.00	1083000.00
State Plan- Total Wildlife Protection and Conservation Measure	8367000.00	8367000.00
State Plan-Elephant Management	738760.00	738760.00
Fund received from PCCF, Odisha under State Plan	115000.00	115000.00
State CAMPA (WL) APO – 2014-15 (Upto March, 2015)	56609000.00	5435490.00
State CAMPA (Gen) APO – 2014-15 (Upto March, 2015)	2468000.00	774293.00
IAP	960000.00	960000.00

10. DEVELOPMENTAL ACTIVITIES.

➤ **New Infrastructure.**

- Construction of 2 nos. Section Offices inside STR under Jenabil & Nawana(S) Range at Tiktali & Dhudruchampa at a cost of 12.00lakh.
- Construction of 2 nos. of Beat house inside STR under Nawana (S) & UBK Range at Jodapal & Gunduria at a cost of 10.00lakh.
- Construction of 2 nos. of Beat house inside STR under Nawana(S) & UBK Range at Bhadrugada & Budhigaon at a cost of 6.00lakh.
- Construction of 2 nos. attach toilet with solar water pump inside STR under Jenabil & UBK Range at UBK & Chhanumber at a cost of 6.00lakh.
- Construction of 1 no. Anti-poaching Camp at Sadananda under Karanjia Division at a cost of 6.00 lakh.



ANTI-POACHING CAMP AT RAMJODI



SECTION OFFICE AT DHUDRUCHAMPA, NAWANA(S) RANGE.

➤ **Protection.**

- i. Anti smuggling Squad (34 nos. squad members) at a cost of Rs.11 lakh of Karanjia Division.
- ii. Incentive given to 7 nos. of informer for intelligence collection at a cost of Rs.10,000 of Karanjia Division.
- iii. Hiring charges of vehicle and P.O.L. of Karanjia Division for protection work at a cost of Rs.2.00lakh.
- iv. Payment of wages to the protection laborer engaged in Similipal RF of Baripada Division at a cost of Rs. 27,96,000/- under the scheme anti smuggling squad.
- v. Incentive paid to the informer of the poaching cases at a cost of Rs 10,000 in Baripada Division.
- vi. Cost of P.O.L. and hiring charges of vehicles for protection duty in Similipal RF at a cost of Rs 2.00lakh in Baripada Division.



ANTI-SMUGGLING SQUAD OF KARANJIA DIVISION FOR PREVENTION OF POACHING, SMUGGLING

➤ **Prevention and Control of Forest Fire.**

- i. Prevention and control measures of forest fire at a cost of 41.00lakh in STR Core.
- ii. Fire Protection Squads engaged for prevention and control of fire at a cost of Rs.1.00lakh in Karanjia Division.
- iii. Prevention and control of forest fire at a cost of 1.5lakh in Baripada Division.

➤ **Repair and Maintenance of Forest Road.**

- i. Maintenance and repair of Forest road (Bush cutting, stone pitching, morrum and earth spreading, site drain, renovation work and wooden bridge repairing) inside STR on 250 Km at a cost of 30.00lakh.



REPAIR OF WOODEN BRIDGE INSIDE SIMILIPAL



MAINTENANCE AND ROAD REPAIR WORK OF FOREST ROAD.

➤ **Veterinary Health Camp**

- i. Organized 06 nos. of Health Camp in 06 nos. villages in Karanjia Division at a cost of Rs. 75,000/-.
- ii. Organized Health Camp in Bangriposi, Pithabata, Dukura, Udala & Kaptipada Range at a cost of Rs. 75000/- in Baripada Division.



HUMAN HEALTH CAMP IN THE PERIPHERY VILLAGES OF STR



VETERINARY HEALTH CAMP IN THE PERIPHERY VILLAGES OF STR



HUMAN HEALTH CAMP IN THE PERIPHERY VILLAGES OF STR

➤ **Habitat improvement work**

- i. Meadow management work 230ha under CAMPA(WL) 2015-16 in STR Core Division.
- ii. Maintenance of existing 5nos. water bodies and bank erosion work has been done at a cost of Rs.3.75lakh in STR Core Division.
- iii. Total 89 nos. SMC work has been done at the cost of Rs.40.00lakhs in STR Core Division for the year 2015-16.



SMC WORK IN SIMILIPAL TIGER RESERVE



DRY STONE MESH GABION BUND FOR WATER HARVESTING

➤ **Water facility**

- i. Drinking water facility to Staff colony at Pithabata at a cost of 2.00lakh.

➤ **Strengthening of Eco-development Committee.**

- i. Distribution of Pumpset, Paddy thresher, Usha sewing machine to grow up the financial benefit among the buffer villagers of Udala, Kaptipada, Dudhiani, Thakurmunda etc. at a cost of 15.00lakh.
- ii. Supplied alternate biomass to villagers of Udala, Kaptipada, Dudhiani, Thakurmunda etc. at a cost of 2.00lakh for use of alternate energy sources to reduce dependence on Similipal Forest.
- iii. Livelihood option to local stake holders (through micro plan) in Karanjia division at a cost of 8.00lakh.
- iv. Provision of fuel efficiency chulla distributed in Kadapani VSS, Thakurgoda, Bilapogha, Kaliani, Bharandachua, Budhigaon, Kusumi, Khandiadhori, Sunaposi VSS, Mankadbeda and Mukтажhari at a cost of Rs. 75,000/- under Karanjia division.
- v. Strengthening of EDC i.e. utensil provided to Rengalbeda, Pahadpur, Kumari EDC, Thakurgoda, Chelidunguri EDC, Kendumundi EDC, Dhatikidiha VSS, Mankadbeda, Hatigoda VSS, Khediaposi, Patrapada EDC, Mandaljhari VSS at a cost of Rs.1.00 lakh in Karanjia Division.
- vi. Alternate Livelihood creation by distribution of Sewing Machines, Water Pumps, Paddy threshers (Pithabata, Dukura, Udala, Kaptipada & Bangripasi) at a cost of Rs. 4.00lakh in Baripada Division.
- vii. Provision of alternate Biomass (Bharat Gas chullah, cylinder etc.) in EDC members of Pithabata, Dukura, Udala, Kaptipada & Bangripasi Range at a cost of Rs.75,000/- in Baripada Division.
- viii. Strengthening of E.D.C. by distribution of plastic chair, tarpaulin, buckets, drum to beneficiaries of Pithabata, Dukura, Udala, Kaptipada & Bangripasi Range at a cost of Rs.1.00lakh in Baripada Division.
- ix. Livelihood option to local stake holders, provision of alternate livelihood to forest dependent community, strengthening of livelihood option through micro plan based activities in cluster approach. Distribution of 39 nos. paddy threshers at a cost of Rs.3.00lakhs by Rairangpur Division.
- x. Provision of alternate biomass and use of alternate energy sources to reduce dependent on Similipal Forests. Distribution of Smokeless Chullah 112nos. at a cost of Rs.0.50lakh by Rairangpur Division.
- xi. Strengthening of EDCs incentive for contribution of Eco-System service. Distribution of pump set-5nos and sewing machine 4nos. at a cost of Rs.1.00lakh by Rairangpur Division.



LIVELIHOOD OPTION TO LOCAL STAKEHOLDER SUPPLY OF WATER PUMP AT PAUDIA UNDER KARANJIA DIVISION



INCENTIVE TO CHIRUPADA VSS (ONE PADDY HARVESTING MACHINE AND ONE NOS. RICE HULLER MACHINE) THAKURMUNDA RANGE, KARANJIA DIVN.



DISTRIBUTION OF CHICKS TO EDC MEMBERS OF PAUDIA VILLAGE UNDER ECO-DEVELOPMENT PROGRAMME, KARANJIA RANGE, KARANJIA DIVISION



DISTRIBUTION OF ENERGY EFFICIENT BIO-MASS CHULLAH TO LOCAL VILLAGERS, KARANJIA DIVISION

11. MOBILE VETERINARY SERVICE (MVS).

Mobile Veterinary Service in Similipal Biosphere Reserve (MVS-SBR) rendering service in Similipal Tiger Reserve (STR) in joint venture with the Wildlife Trust of India, handled of total 99 cases during the period from July'2015 to June'2016. Details numbers of different species are given below-

Reptiles : Handled 87 cases including three Indian Rock Python (schedule-I), one Monitor Lizards and five chameleons

Mammals: Handled 09 cases of mammals including one Elephant(schedule-I), one Bear cub, one Barking Deer, three primates, one Common Palm Civet, one Mongoose and two Indian Giant Flying squirrels.

Birds: Handled three birds- one Barn swallow, one Copper Smith Barbet and one Crested Serpent Eagle

During this period MVS-SBR attended three rescue cases one Leopard driving at Udala under Baripada division, one diseased elephant which was tranquilized and examined and treated in wild in Anandapur and one Boar case in Baniabasa.

Apart from that MVS-SBR also conducted an awareness cum training program among Front line staff of Forest Department in Five Divisions including STR and also assisting in feeding and health management of one abandoned elephant calf (Babloo) at Temporary Animal Rescue shelter under Pithabata Range(WL).

Rescued Elephant calf under Rehabilitation process at Temporary Relocation Centre, Pithabata (WL) Range.

The abandoned male elephant calf at an early age of 3 months was rescued successfully in Dukura area in December 2014 by Forest Department in joint venture with staff of Wildlife Trust of India and wildlife activists, though it was tried to reunite with maternal herd before its rescue it was left abandoned by its mother. Now it has grown up to a strong, healthy calf of 2 years in age at its temporary shelter, Pithabata (WL) Range under supervision of STR Veterinary Officer Dr. Piush Soren and Dr. Khanin Changmai of WTI. The elephant calf still under strict rehabilitation process at the centre with a possibility to release back into the wild.

12. RESCUE AND RELEASE OF WILD ANIMAL.

Sl. No.	Name of Division	Name of animal	Date of rescue	Place of rescue	Date of Release	Place of Release.
1	Baripada	Common Wolf snake	3-Jul-15	Pithabata	3-Jul-15	Pithabata STR
2	Baripada	Spectacled Cobra	4-Jul-15	Bhanjpur	4-Jul-15	Manchabandha
3	Baripada	Spectacled Cobra	5-Jul-15	Jarabari, Dokura	5-Jul-15	Dokura
4	Baripada	Spectacled Cobra	7-Jul-15	Baripada	7-Jul-15	Manchabandha
5	Baripada	Spectacled Cobra	10-Jul-15	Baripada	10-Jul-15	Bhadasore
6	Baripada	Spectacled Cobra	10-Jul-15	Manchabandha	10-Jul-15	Bhadasore
7	Baripada	Russell's Viper	10-Jul-15	Baripada	10-Jul-15	Bhadasore
8	Baripada	Checkered Kil Back	18-Jul-15	Baripada	18-Jul-15	Pithabata STR
9	Baripada	Monocled Cobra	18-Jul-15	Baisinga, Betnoti	18-Jul-15	Betnoti
10	Baripada	Indian Rock Python	19-Jul-15	Pithabata	23-Jul-15	Pithabata STR
11	Baripada	Spectacled Cobra	23-Jul-15	Pithabata	23-Jul-15	Pithabata STR
12	Baripada	Bronz back Tree	8-Aug-15	Pithabata	12-Aug-15	Pithabata STR
13	Baripada	Sand Boa	9-Aug-15	Pithabata	12-Aug-15	Pithabata STR
14	Baripada	Chameleon	11-Aug-15	Lulung Road side	11-Aug-15	Pithabata STR
15	Baripada	Swallow Bird	12-Aug-15	Baripada	13-Aug-15	Pithabata STR
16	Baripada	Green Keel Back	21-Aug-15	Pithabata	21-Aug-15	Pithabata STR
17	Baripada	Russell's Viper	26-Aug-15	Baripada	28-Aug-15	Pithabata STR

Simipal Tiger Reserve, Mayurbhanj, Odisha

18	Baripada	Spectacled Cobra	28-Aug-15	Baripada	28-Aug-15	Pithabata STR
19	Baripada	Indian Rat Snake	29-Aug-15	Baripada	29-Aug-15	Baripada
20	Baripada	Common Krait	29-Aug-15	Baripada	29-Aug-15	Pithabata STR
21	Baripada	Sloth Bear	30-Aug-15	Baholda, Rairangpur	7-Sep-15	Pithabata STR
22	Baripada	Indian Rock Python	6-Sep-15		10-Sep-15	STR
23	Baripada	Russell's Viper	8-Sep-15	Manchabandha	9-Sep-15	Manchabandha
24	Baripada	Indian Rock Python	9-Sep-15	Pithabata Buffer /Fringe	10-Sep-15	STR
25	Baripada	Hanuman Langur	5-Oct-15	Deuli Range area	10-Oct-15	Pithabata STR
26	Baripada	Asian palm Civet	10-Nov-15	Station Market	11-Nov-15	Pithabata STR
27	Baripada	Spectacled Cobra	22-Nov-15	Pithabata Camp	23-Nov-15	Pithabata Lulung
28	Baripada	Rhesus macaque	24-Dec-15	Teritorial Pithabata Range office	29-Dec-15	MVS station ,STR
29	Baripada	Barking Deer	9-Feb-16	Pithabata	9-Feb-16	MVS station ,STR
30	Baripada	Checkered Keel Back	11-Feb-16	Bhanjpur	11-Feb-16	Bhanjpur
31	Baripada	Indian Giant Flying Squirrel	29-Feb-16	Pithabata	1-Mar-16	MVS station ,STR
32	Baripada	Hanuman Langur	3-Apr-16	Pithabta	3-Apr-16	Pithabata
33	Baripada	Copper smith Barbet	8-Apr-16	Pithabta	8-Apr-16	Pithabata
34	Baripada	Indian Giant Flying Squirrel	10-Apr-16	Pithabta	16-Apr-16	MVS station
35	Baripada	Crested Serpent Eagle	21-Apr-16	Baripada	22-Apr-16	MVS station
36	Baripada	Common Sand Boa	29-Apr-16	Baripada	7-May-16	Manchabandha
37	Baripada	Chameleon	5-May-16	Baripada	6-May-16	Manchabandha
38	Baripada	Sand Boa	5-May-16	Baripada	6-May-16	Manchabandha
39	Baripada	Cat Snake	5-May-16	Baripada	6-May-16	Manchabandha
40	Baripada	Asian Elephant	9-May-16	Anandapur	9-May-16	Haggarh, Anadapur
41	Baripada	Monitor Lizard	26-May-16	Charch Road, Baripada	27-May-16	Manchabandha
42	Baripada	Mongoose	26-May-16	Station Bazar, Baripada	27-May-16	Manchabandha
43	Baripada	Rat Snake	26-May-16	Dhanpur, Baripada	27-May-16	Manchabandha
44	Baripada	Rat Snake	26-May-16	Dhanpur, Baripada	27-May-16	Manchabandha
45	Baripada	Russells Viper	26-May-16	Padastia, Udala Road	27-May-16	Manchabandha
46	Baripada	Spectacled Cobra	26-May-16	Talasaahi, Baripada	27-May-16	Manchabandha
47	Baripada	Russells Viper	28-May-16	Debendrapur, Baripada	28-May-16	Debendrapur
48	Baripada	Chameleon	31-May-16	Convent Road	1-Jun-16	Manchabandha
49	Baripada	Spectacled Cobra	31-May-16	Convent Road	1-Jun-16	Manchabandha

Simipal Tiger Reserve, Mayurbhanj, Odisha

50	Baripada	Common Kukri	31-May-16	Baripada	1-Jun-16	Manchabandha
51	Baripada	Common Wolf Snake	31-May-16	Baripada	1-Jun-16	Manchabandha
52	Baripada	Checkered keelback	1-Jun-16	Station Bazar, Baripada	1-Jun-16	Manchabandha
53	Baripada	Russells Viper	2-Jun-16	Baripada	4-Jun-16	Manchabandha
54	Baripada	Spectacled Cobra	2-Jun-16	Baripada	4-Jun-16	Manchabandha
55	Baripada	Spectacled Cobra	3-Jun-16	Baripada	4-Jun-16	Manchabandha
56	Baripada	Russells Viper	3-Jun-16	Baripada	4-Jun-16	Manchabandha
57	Baripada	Russells Viper	3-Jun-16	Baripada	4-Jun-16	Manchabandha
58	Baripada	Russells Viper	3-Jun-16	Baripada	4-Jun-16	Manchabandha
59	Baripada	Spectacled Cobra	3-Jun-16	Baripada	4-Jun-16	Manchabandha
60	Baripada	Spectacled Cobra	3-Jun-16	Baripada	4-Jun-16	Manchabandha
61	Baripada	Spectacled Cobra	3-Jun-16	Baripada	4-Jun-16	Manchabandha
62	Baripada	Spectacled Cobra	6-Jun-16	Baripada	7-Jun-16	Manchabandha
63	Baripada	Spectacled Cobra	6-Jun-16	Baripada	7-Jun-16	Manchabandha
64	Baripada	Spectacled Cobra	6-Jun-16	Baripada	7-Jun-16	Manchabandha
65	Baripada	Spectacled Cobra	6-Jun-16	Baripada	7-Jun-16	Manchabandha
66	Baripada	Russells Viper	6-Jun-16	Baripada	7-Jun-16	Manchabandha
67	Baripada	Russells Viper	6-Jun-16	Baripada	7-Jun-16	Manchabandha
68	Baripada	Russells Viper	6-Jun-16	Baripada	7-Jun-16	Manchabandha
69	Baripada	Spectacled Cobra	7-Jun-16	Baripada	7-Jun-16	Manchabandha
70	Baripada	Russells Viper	15-Jun-16	Baripada	16-Jun-16	Manchabandha
71	Baripada	Russells Viper	15-Jun-16	Baripada	16-Jun-16	Manchabandha
72	Baripada	Russells Viper	15-Jun-16	Baripada	16-Jun-16	Manchabandha
73	Baripada	Russells Viper	15-Jun-16	Baripada	16-Jun-16	Manchabandha
74	Baripada	Russells Viper	15-Jun-16	Baripada	16-Jun-16	Manchabandha
75	Baripada	Russells Viper	15-Jun-16	Baripada	16-Jun-16	Manchabandha
76	Baripada	Spectacled Cobra	15-Jun-16	Baripada	16-Jun-16	Manchabandha
77	Baripada	Spectacled Cobra	15-Jun-16	Baripada	16-Jun-16	Manchabandha
78	Baripada	Spectacled Cobra	15-Jun-16	Baripada	16-Jun-16	Manchabandha
79	Baripada	Spectacled Cobra	15-Jun-16	Baripada	16-Jun-16	Manchabandha
80	Baripada	Chameleon	16-Jun-16	Baripada	16-Jun-16	Manchabandha
81	Baripada	Bronz Back Tree	16-Jun-16	Baripada	16-Jun-16	Manchabandha
82	Baripada	Spectacled Cobra	20-Jun-16	Baripada	21-Jun-16	Manchabandha
83	Baripada	Spectacled Cobra	20-Jun-16	Baripada	21-Jun-16	Manchabandha
84	Baripada	Spectacled Cobra	20-Jun-16	Baripada	21-Jun-16	Manchabandha
85	Baripada	Spectacled Cobra	20-Jun-16	Baripada	21-Jun-16	Manchabandha
86	Baripada	Spectacled Cobra	20-Jun-16	Baripada	21-Jun-16	Manchabandha
87	Baripada	Spectacled Cobra	20-Jun-16	Baripada	21-Jun-16	Manchabandha
88	Baripada	Chameleon	21-Jun-16	Baripada	21-Jun-16	Manchabandha
89	Baripada	Russells Viper	20-Jun-16	Baripada	21-Jun-16	Manchabandha
90	Baripada	Russells Viper	20-Jun-16	Baripada	21-Jun-16	Manchabandha
91	Baripada	Common Vine Snake	20-Jun-16	Baripada	21-Jun-16	Manchabandha
92	Baripada	Common Krait	20-Jun-16	Baripada	21-Jun-16	Manchabandha

Simipal Tiger Reserve, Mayurbhanj, Odisha

93	Baripada	Common Krait	20-Jun-16	Baripada	21-Jun-16	Manchabandha
94	Baripada	Spectacled Cobra	23-Jun-16	Baripada	23-Jun-16	Manchabandha
95	Baripada	Spectacled Cobra	23-Jun-16	Baripada	23-Jun-16	Manchabandha
96	Baripada	Spectacled Cobra	23-Jun-16	Baripada	23-Jun-16	Manchabandha
97	Baripada	Spectacled Cobra	23-Jun-16	Baripada	23-Jun-16	Manchabandha
98	Baripada	Rat Snake	23-Jun-16	Baripada	23-Jun-16	Manchabandha
99	Baripada	Spectacled Cobra	27-Jun-16	Murgabari, Baripada	27-Jun-16	Manchabandha
100	Baripada	Spectacled Cobra	27-Jun-16	WardNo.17 Baripada	27-Jun-16	Manchabandha
101	Baripada	Spectacled Cobra	27-Jun-16	Manchabandh a	27-Jun-16	Manchabandha
102	Baripada	Spectacled Cobra	27-Jun-16	Ranjium, Nini Babu	27-Jun-16	Manchabandha
103	Baripada	Russells Viper	27-Jun-16	WardNo10, Jubli Libray	27-Jun-16	Manchabandha
104	Baripada	Russells Viper	29-Jun-16	Hamilton Garden, Baripada	29-Jun-16	Manchabandha
105	Baripada	Spectacled Cobra	29-Jun-16	MPC Junior College	29-Jun-16	Manchabandha
106	Baripada	Spectacled Cobra	29-Jun-16	Gangaraij, Baripada	29-Jun-16	Manchabandha
107	Baripada	Spectacled Cobra	29-Jun-16	Manchabandh a	29-Jun-16	Manchabandha
108	Baripada	Rat Snake	29-Jun-16	WardNo2, Baripada	29-Jun-16	Manchabandha

13. STAFF WELFARE.

- Leech guards have been provided to all the staff and daily wage protection assistants working in core area.
- First aid kits have been provided to all anti-poaching camps inside core area.
- Facilitation of medical treatment of core area staff at District Headquarters Hospital, Baripada being done by STR Headquarters.
- The daily wage workers were brought under EPF scheme with retrospective effect from 2010 in phased manner.

14. PHASE-IV TIGER MONITORING.

Monitoring through Carnivore Signs Survey.

The 3 day carnivore sign Survey was conducted during November (2015) and May (2016) in 181 units covering both core and buffer areas. The division wise breaks up of units are STR core-75 units, Baripada-32 units, Karanjia-46 units and Rairangpur-28 units, Kuldiha Corridor- 4 units & Anandpur corridor- 4 units. A total **515** and **273** carnivore's sign were encountered in **November 2015** and **May 2016** respectively. Out of which **58 Tiger sign** and **223 Leopard sign** were obtained during the **November 2015** and **36 Tiger sign** and **64 Leopard sign** were encountered during the **May 2016**. The direct and indirect evidence of carnivores like Tiger, Leopard, Jungle cat, Bear, Wild boar, Hyena, Wolf, Jackal were encountered. In **post Monsoon (2015)** November, highest carnivore sign (n=237) were observed in STR core division followed by Karanjia (n=159), Rairangpur (n=85) and Baripada (n=34), Anandpur Corridor (n=33) & Balasore Corridor (n= 16). Similarly in **Pre Monsoon (2016)** **May** highest carnivore sign (n=102) were observed in STR core division followed by Karanjia (n=98), Rairangpur (n=60) and Baripada (n=13), Anandpur Corridor (n=27) and Balasore corridor (n=17).



Monitoring of Prey Population.

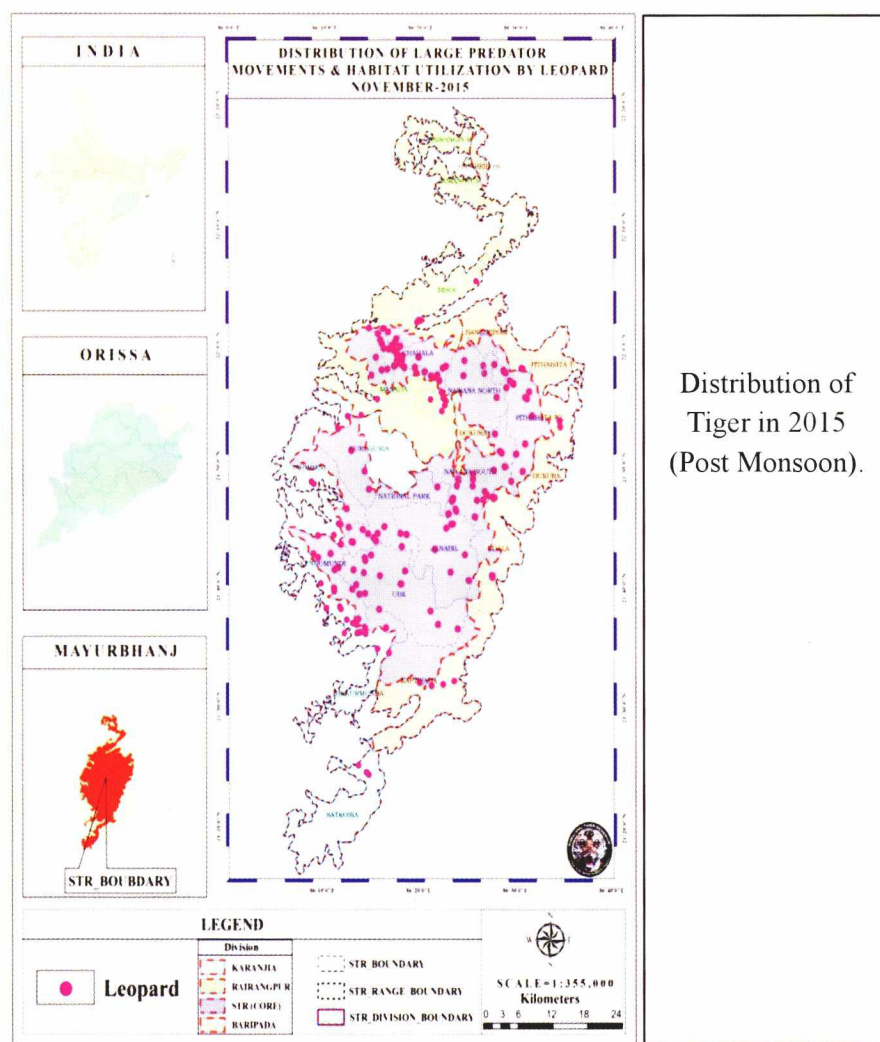
A 3 day survey was conducted in **November (2015)** and **May (2016)** in 181 units covering both core and buffer areas. The division wise breaks up are STR core-75 units, Baripada-32 units, Karanjia-46 units and Rairangpur-28 units, Kuldiha corridor-4 and Anandpur corridor-4 units. During the period prey species were encountered along the transect line like Sambar, Chital, Barking deer, Wild boar, Common langur, rhesus Macaque, Indian gaur, giant squirrel, pea fowl, hare and elephant. The estimate of prey population density was calculated on soft ware DISTANCE. In Post Monsoon (**November 2015**) highest prey population $35.8/\text{km}^2$ was estimated in Similipal core followed by Karanjia- $25.1/\text{km}^2$, Rairangpur- $18.4/\text{km}^2$ and Baripada $16.9/\text{km}^2$. Similarly in Pre Monsoon (**May-2016**) $32.4/\text{km}^2$ prey population was estimated in Similipal core followed by Karanjia $17.5/\text{km}^2$, Baripada $10.9/\text{km}^2$ and Rairangpur Division $10.8/\text{km}^2$.

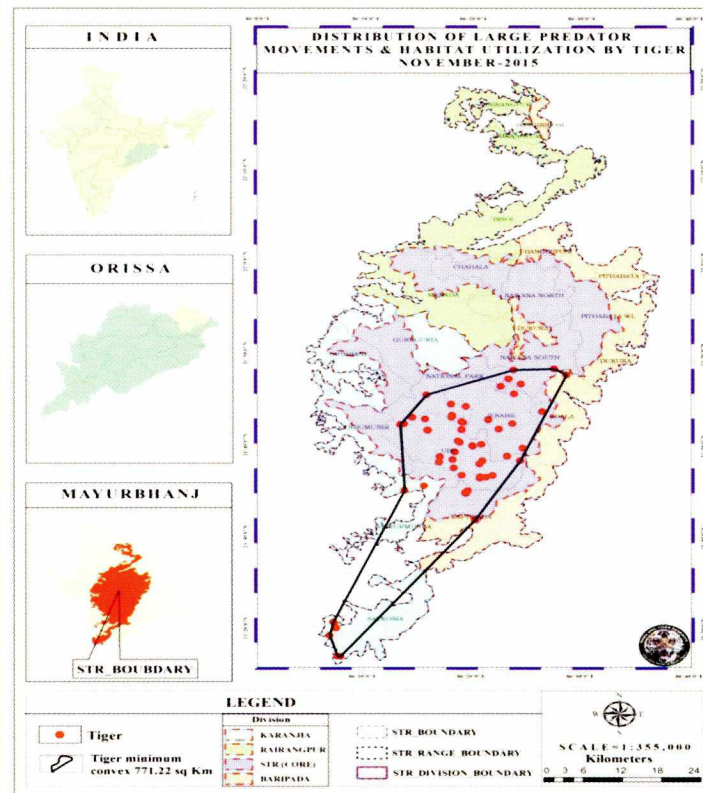


BISON HERD IN A SALT LICK

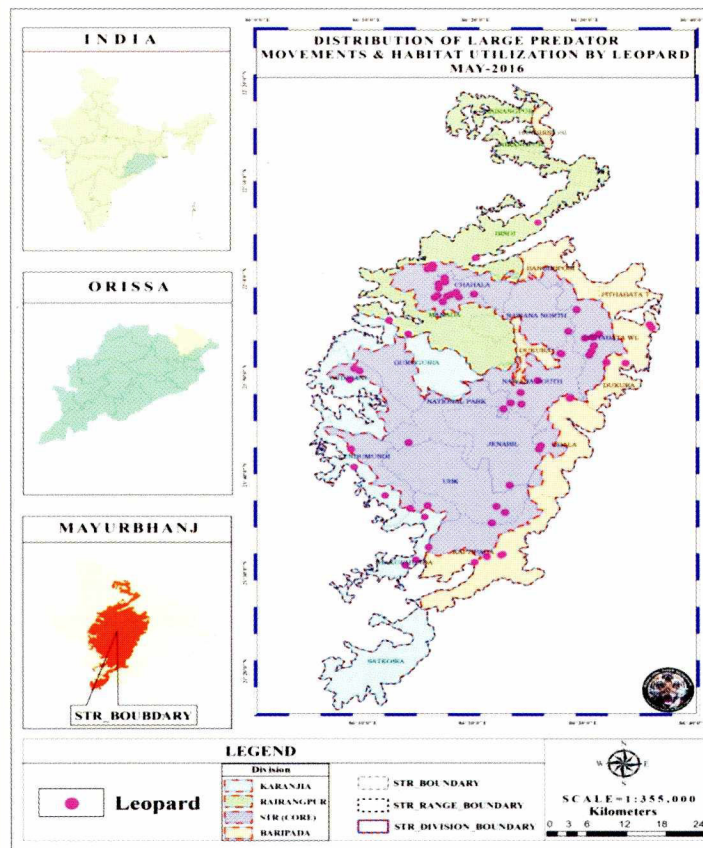


HERD OF CHITAL IN SIMILIPAL

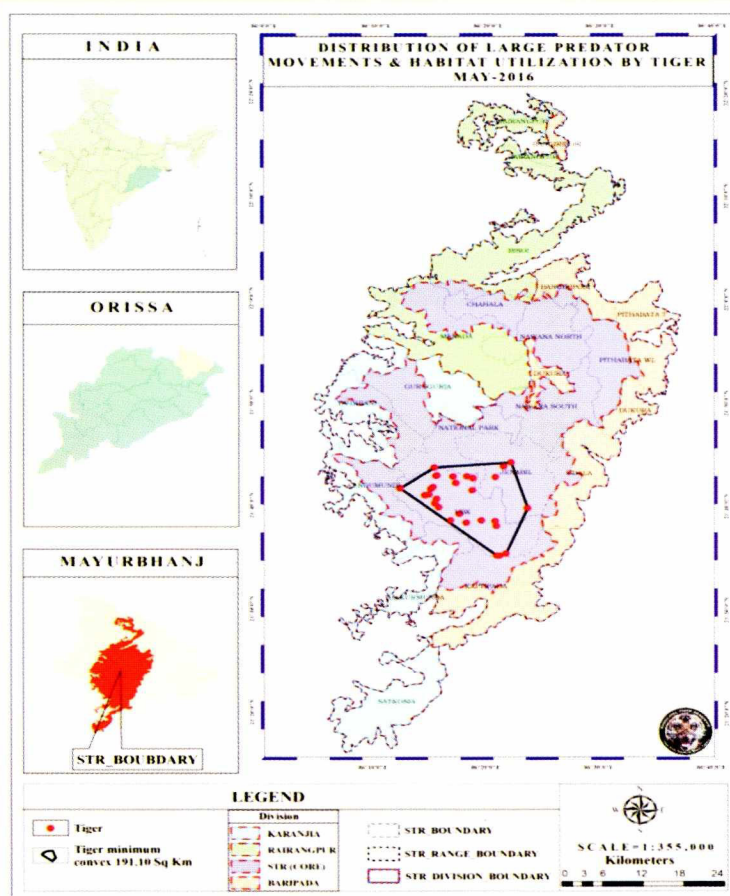




Distribution of Tiger in 2015 (Post Monsoon).



Distribution of Leopard in 2016 (Pre Monsoon).



Distribution of Tiger in 2016 (Pre Monsoon).

15. ALL ODISHA TIGER CENSUS.

State wide Tiger/Leopard Estimation Excercise-2016 Covering all the 8 Circles and 46 Divisions of the State was carried out between 5th February, 2016 to 10th February 2016. A total of 20,174 PIPs (Pug Impression pads) were laid and 448 trap cameras (including 315 cameras in Similipal) were installed to reaffirm the estimated population. In Similipal Tiger Reserve, the exercise was repeated between 17th April, 2016 to 30th April 2016 in which 420 cameras were installed and 11,370 PIPs were laid.

The Tiger and Leopard population in the State for 2016 is estimated to be 40 and 318 respectively. In Similipal Core Division 26 numbers of Tigers are estimated out of which 9 Males, 14 Females and 3 cubs. Similiarly in Tiger Reserve portion falling in Karanjia division 3 numbers of female Tiger were estimated.

The breakup of estimated Tiger population of 2016.

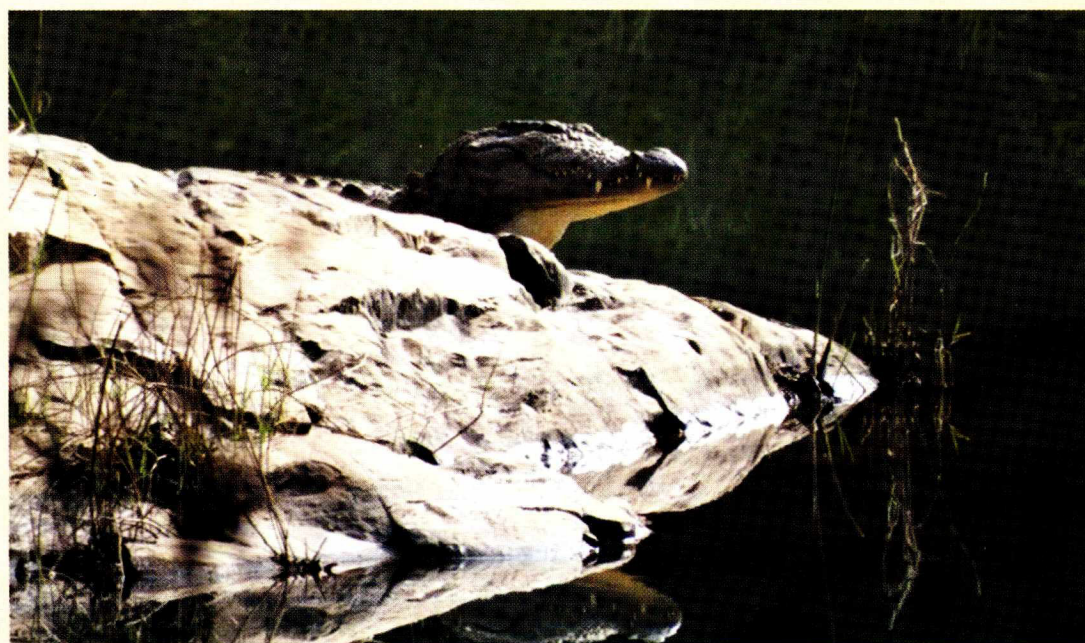
Division	Male	Female	Cub	Total
Similipal (core division)	9	14	3	26
Karanjia	0	3	0	3
Total	9	17	3	29

16. GIS LABORATORY ACHIEVEMENTS.

- Mapping of meadow using GIS was done for better management of the meadows.
- Location of Range and Anti-poaching camp of STR.
- Eco-sensitive zone of Similipal Tiger Reserve.
- Distribution pattern map of Tiger and Leopard prepared for the year November, 2015 and May, 2016.
- Location map of elephant death.
- Out side village boundary of STR i.e. 0 to 10km.
- Soil sample test of Dukura Range.
- Elephant corridor map of Mayurbhanj.

17. CROCODILE CENSUS.

Survey of Muggers in Similipal was conducted on 08/01/2016 & 09/01/2016 to ascertain the status of Muggers inside Similipal Tiger Reserve. The direct sighting method was used to count the number of Muggers. Different river systems were surveyed and direct sighting as well as indirect evidence such as tunnel, basking place, scute mark on the ground were collected. The body length was measured by ocular estimation during direct sighting while the same was also estimated from the tracks of hind paw and the tail marks. The body length is equal to approximately 14 x paw length and approximately 65 times the maximum distance between two lines created because of movement of tail. A total of 79 muggers were found in seven different river systems in Similipal. Highest number of crocodiles were in West Deo followed by Khadkei, East Deo, Budha Balanga and Khairi and Bhandan river.

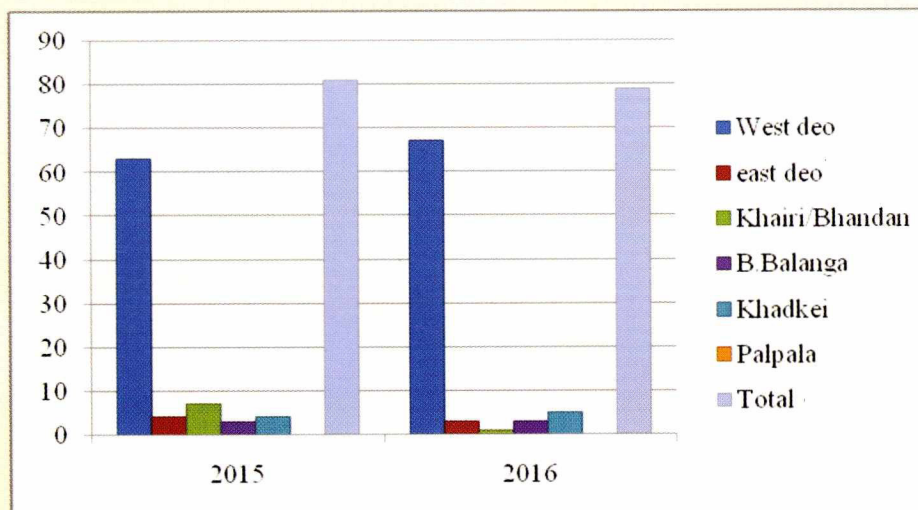


A PICTURE OF MUGGER CROCODILE DURING THE PERIOD OF MUGGER CENSUS

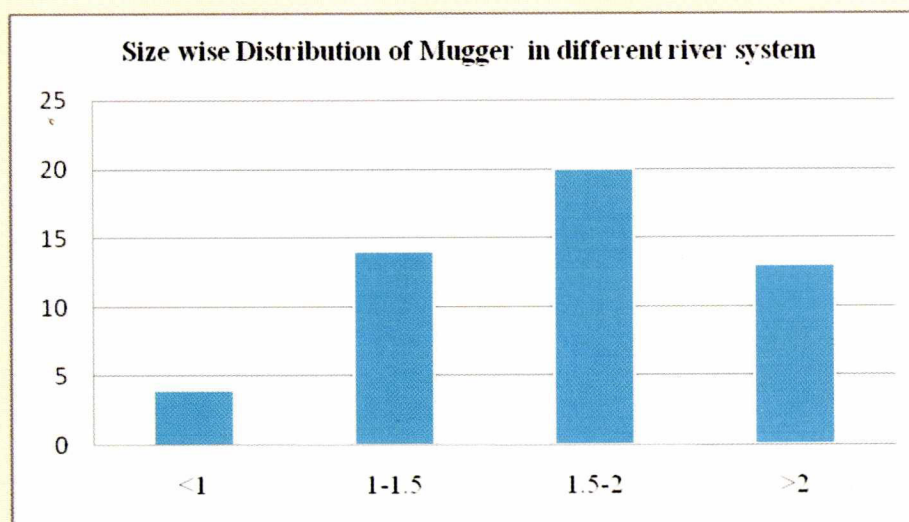
Similpal Tiger Reserve, Mayurbhanj, Odisha

Population Status of Mugger crocodile in different river system

RIVER SYSTEM S	West deo	East deo	Khairi/Bhandan	B.Balanga	Khadkei	Palpala	Total
2015	63	04	07	03	04	00	81
2016	67	03	01	03	05	00	79

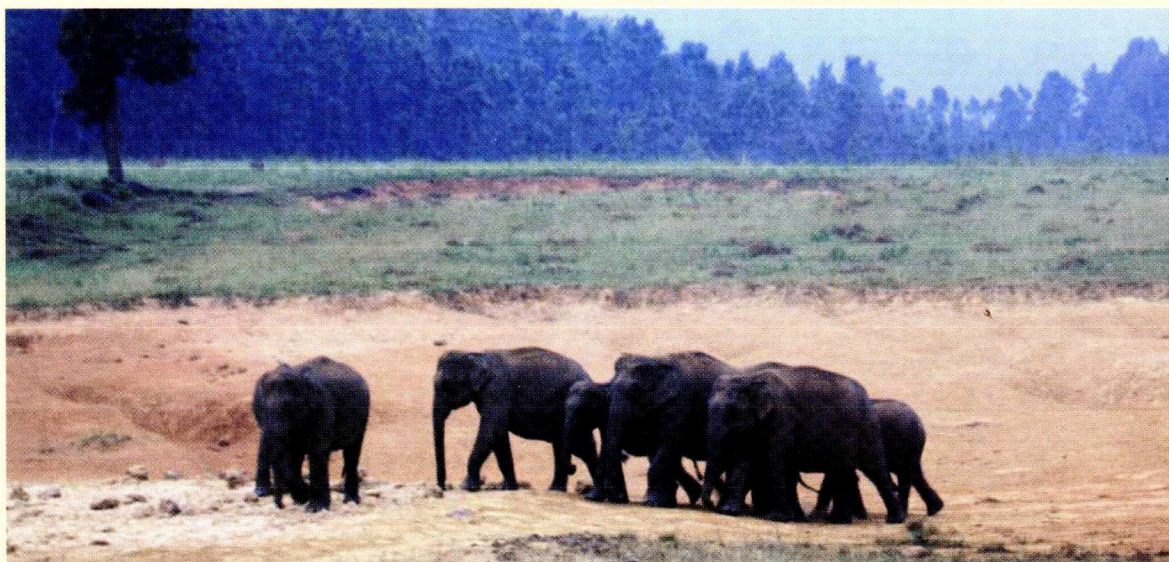


Mugger numbers in different river system of Similpal Tiger Reserve.



18. ELEPHANT CENSUS-2015 IN RESPECT OF SIMILIPAL TIGER RESERVE.

Division/ Area	Adult Bull	Adult Cows	Sub-adult Bull	Sub adult cows	Adult/Sub adult unknown	Juvenile	Calf	Total
Similipal Core	16	117	23	89	01	34	57	337
Baripada	4	20	10	20	0	3	11	68
Karanjia	5	10	8	18	0	7	8	56
Rairangpur	8	20	0	1	0	1	18	48
Total	33	167	41	128	1	45	94	509



Herd Composition of inter-state migratory elephant during 2015-16 in Mayurbhanj District.

Division	Year	Adult Tusker	Adult Female	Sub-Adult Tusker	Sub-Adult Female	Juvenile	Calf
Rairagpur	2015-16	04	09	03	13	-	06
Baripada	2015-16	12	08	03	02	01	01
Karanjia	2015-16	38	180	37	120	40	80

19. MAN-ELEPHANT INTERFACE DURING 2015-16.

DIVISION	YEAR	CROP DAMAGE IN ACRE	HOUSE DAMAG E IN NO	HUMAN INJURY		HUMAN KILL	TOTAL COMPASSIONA TE AMOUNT PAID in Rs.
				Permanent	Temporary		
Rairangpur	2015-16	299.122	-	02	06	03	4157010
Baripada	2015-16	53.35	06	01	-	-	6500
Karanjia	2015-16	212.2528	70	01	-	04	3427457

20. INTER-STATE MOVMENT OF ELEPHANT IN DURING 2015-16.

DIVISION	STATE FROM WHERE ENTERED	ENTRY POINT	HERD COMPOSITION
Rairangpur	Jharkhand	Budhirana R.F Adelbeda Rangamatia.	05
	Jharkhand	-do-	07
	Jharkhand	-do-	18
	Jharkhand	Ramgarh Asurghati R.F, Surda Jashipur	05
Baripada	West Bengal to Kadakotha, Gangasole, Bisusol, Ghanghana, Lodhakundia, Lekedugunja.	Kiakali, Bhaduasole, Tiansi, Bhatchhater, Badsole, Kanjamunda, Bhaduasole, Jhirani, Dhireidhi, Tiansi, Gangasole, Rasgovindpur, Devsole.	Adult Tusker-12 Adult Female-08 Sub-Adult Tusker-03 Sub-Adult Female-02 Juvenile-01 Calf-01
Karanjia	Jharkhand	Asadola, Bhimkund, UdayasahiDPF, Dari RF, Kaleitumba.	Maximum no herd -73 Minimum no-02

21. DEATH OF ELEPHANT DURING 2015 – 16.

Name of the Division	Date of Detection	Place of Detection Compt. No/Range	Sex	Age	Nature of Mortality
STR	16.07.2015	Bahalda Coreline, Compt. No. PP-19 of Pithabata (WL) Range	Male	15 Years	Due to anthrax
	12.09.2015	Tirilakhal Nala, Compt. No. PP - 06 of Nawana (N) Range	Female	14 / 15 Years	Natural
	26.09.2015	Hatikot forest, Compt. No. SJ - 03 of Pithabata (WL) Range	Female	15 / 20 Years	Not Known
	28.12.2015	Talada Nala, Compt No. SJ - 19 (P - 1) of Nawana (S) Range	Male	20 Years	Due to anthrax
	31.12.2015	Kulachua Forest, Compt. No. WD - 17 (P-1) of UBK Range	Female		Due to anthrax
	21.01.2016	Bahaghar Nala, Compt. No. WD - 26 of UBK Range	Male	8 - 10 Years	Due to anthrax
	30.01.2016	Pachiribasa F. Compt. No. BLE- 14 of Nawana(N) Range	Male (Makhna)	20 years	Due to anthrax
	03.02.2016	Marachati (Core line) Compt No. PP-16 of Pithabata Range	Female	15 years	Due to anthrax
	12.06.2016	Bengpani beat, Compt. No. WD - 30 of UBK Range	Male	4 - 5 Years	Due to anthrax
BARIPADA	02.11.2015	Sijupani Nala, Compt. No. - SJ - 5 of Dukura Range	Female	9 - 10 Years	Due to cardio respiratory failure
	26.11.2015	Notto R.F. near Haridachua of Kaptipada Range	Female	50 Years	Due to Old age
	13.12.2015	Sapanchua beat, Compt. No. SJ- 5 of Dukura Range	Male	8 -10 Years	Due to anthrax

Similipal Tiger Reserve, Mayurbhanj, Odisha

KARANJIA	25.11.2015	Similipal RF, Compt. No. -KH - 6 of Gurguria Range	Female	Not known	Died due to mammary gland burst during giving child birth (mother & calf 2 nos.)
	29.11.2015	In side Similipal Tiger Reserve, compt. No. - TL - 8 of Kendumundi Range	Female	Not known	Due to rapture of stomach & defuse peritonitis
	08.12.2015	Pahadpur beat, Bhanda section of Gurguria Range	Male	Not known	Due to anthrax
	19.04.2016	Purunapani beat, Compt. No.- SL- 6 of Thakurmunda Range	Female	60 Years	Due to Old age
RAIRANGPUR	21.11.2015	Teltangia DPF of Rairangpur Range	Male	15 Years	Not ascertained by the VAS due to putrefication & destruction of visual organ of elephant
	24.11.2015	Inside Budheirana R.F. of Bahalda Range.	Female	12 - 15 Years	Not ascertained by the VAS due to putrefication & destruction of visual organ of elephant
	18.12.2015	Masin Nala near Chakundakocha of Similipal RF, Compt. No. - BH - 6 of Manada Range	Female	2 Years	Accidental fell down from the top of hill to deep nala
	24.03.2016	Gorumahisani RF near Katupit village.	Female	50 - 60 Years	Natural death due to Old age & weakness affected in Pneumonia & Hepatitis
	10.05.2016	Inside Jhanjharapahar near Judia village of Bisoi Section of Bisoi Range	Male	07 - 08 Years	May be due to Pneumonia with nodular growth in lungs.

22. CAPACITY BUILDING.

22.1. Botanisation programme.

Inventory of biodiversity is the fundamental starting point for its conservation, sustainable use and management. Knowledge of the presence and abundance of organisms in a given area from local to regional scale is crucial for the preservation, management and sustainable utilization of biotic resources. Keeping in view of the above facts botanisation programme to field staff has been continued in Similipal Tiger Reserve. Each forest section has been considered as the base camp for training programme and Foresters and Forest guards have been trained regarding the identification and nomenclature of plants by in-house researcher.



CAPACITY
BUILDING OF
FRONTLINE FIELD
STAFF OF
SIMILIPAL TIGER
RESERVE ON
BOTANISATION OF
FLORA OF
SIMILIPAL TIGER
RESERVE

22.2. Training on meadow management

Meadows play an important role for wild herbivores. To improve the knowledge on meadow management of field staffs, a training programme was conducted on 27.12.2015 to 29.12.2015. In this training programme Dr. G. Muratkar, an expert of grassland management of Maharashtra suggested about different methods and techniques for better improvement and maintenance of meadows. In this programme Field Director, Deputy Director, Research fellow, all Range officers, local Forester and Forest guards actively participated.



WORKSHOP ON MEADOW MANAGEMENT AT JENABIL, STR



MEADOW MANAGEMENT WORK GUIDED BY G. MURATKAR.

22.3 Training programme for All Odisha Tiger Estimation:

As per the schedule the State level Tiger Monitoring Training was conducted inside Similpal Tiger Reserve from 01.11.2015 to 24.11.2015 in four (04) batches. Out of 171 nos. of enlisted trainees comprising of Foresters and Forest Guards of different Forest and Wildlife Divisions of the State, 161 nos. of trainees participated in the training.

Detail schedule of Training programme:

1 st batch 01.11.2015 to 06.11.2015-	48 nos
2 nd batch 07.11.2015 to 12.11.2015-	46nos
3 rd batch 13.11.2015 to 18.11.2015-	43 nos
4 th batch 19.11.2011 to 24.11.2015-	24 nos



STATE LEVEL TIGER MONITORING TRAINING TO FRONTLINE STAFF OF FOREST DEPARTMENT, GOVT. OF ODISHA. 161NO. OF FIELD STAFF TRAINED.



STATE LEVEL TIGER MONITORING TRAINING TO FRONTLINE STAFF OF FOREST DEPARTMENT, GOVT. OF ODISHA. FIELD VISIT BY THE TRAINEES

22.4 Forest Law training.

Training programme on Wildlife Protection Act (1972) and other related laws was conducted by a proficient Lawyer at Pithabata & Ramatirtha on 12 & 13 July 2015. The frontline staffs of all ranges of STR participated and learnt about preparation of case record in Wildlife cases with field exercise.

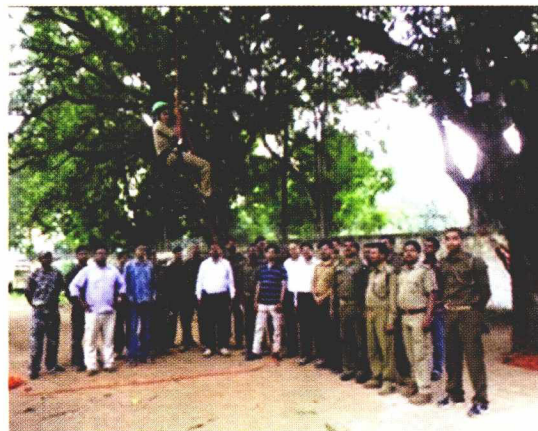


RANGE LEVEL WORKSHOP ON FOREST LAW FOR THE FRONT LINE STAFF OF SIMILPAL TIGER RESERVE

22.5 Rescue training.

Rescue training was conducted in 5 divisions (STR, Baripada & Balasore in June, Rairangpur in July & Karanjia in August) 15 members of each division (3 nos. Foresters, 7 nos. Forest Guard & 5 nos. of Protection assistants) were trained by VAS, STR with WTI staffs. The main topics covered

- Species identification & their habit.
- Animal Rescue and Transportation.
- Immunization.
- First aid of injured rescued animals.



RESCUE TRAINING OF FIELD STAFF IN COLLABORATION WITH WTI IN KARANJIA DIVISION

Concept behind the training.

The training is organized primarily to address the rescue crisis in and around Similipal Biosphere Reserve as the forest Department, Similipal Tiger Reserve, and local community have been facing numbers of Animal-Human conflicts in the area during these years. Initially this training is carried out in five forest Divisions so as to aware and to give basic idea of rescue and its ethics along with few important subtopics . Initially training was given to 15 nos. of frontline staff in each division comprising Foresters-3nos, Forest Guards-7 nos and Senior Protection Asst/ watchers-5 nos. During this whole training programme five best individual rescuers from each Division on the basis of interests, performance, fitness and communication skill were selected to form a final Circle level Rescue Team. The final Rescue team will be trained with further advanced courses with refreshers with the help of experienced professionals as per requirement in due course of time. This Rescue team will not only help the MVS-SBR unit but also in different Rescue Operations and Human-Animal conflicts situations in the future in four divisions and the Similipal Tiger Reserve (total-5) which is identified as Rescue zone in and around Similipal Biosphere Reserve in the region. During any rescue the team of five members of nearest division will move to the spot and thereby they will study the situation and keep informing all required details like rescue potentials, landscape, crowd movements etc. till the Final Rescue Team of another 20 members get ready with all equipments along with MVS unit and reach the rescue site as soon as possible.

Subjects of the training:

Though the training was carried out to aware the Frontline staff about Rescue Basics and Ethics , few of the important sub topics were also included in the training like, 1-Basic Identification cum Behavioural habits (Feeding and Habit pattern) of commonly found mammals , birds and reptiles , 2-An approach to Wildlife First Aid, 3- Importance of Documentation and Practical training on Rope rescue, 4- Rescue in Water bodies and 5- Snake Handling.

Training Personnel/Resource persons:

1. Mr. Rudra Mahapatra Asst. Manager, WTI
2. Dr. Khanin Changmai, V.S. MVS-SBR, WTI
3. Dr. Piush Soren, F.V.O., Similipal Tiger Reserve
4. Mr. Madhumoy Mallick, ERN Member, WTI

The Following rescue items has been purchased by the Similipal Tiger Reserve for strengthening of the Rescue Team.

1. Night Vision Binocular- 1 nos.
2. Polycarbonate Sealed (Dhaal) for crowd management.
3. Rope net -6nos.
4. Helmet- 15nos.
5. Net Projector (Gun)- 5nos.
6. Rope net- 19nos.
7. Rope ladder – 1no.
8. Life Jacket- 8nos.
9. Guarding Net Pole 50 mtr.

22.6. Exposure visits.

To improve the management capacity of field level staffs for conservation and protection of wild animals and their habitat, 17 nos. of forest staffs of STR visited Satpura National Park of Madhya Pradesh.

Date	Place of visit	Participants
23.02.2016 to 28.02.2016	Satpura National Park, Madhya Pradesh.	Arun Kumar Biswal, OFS(JB), ACF, STR, Ugresan Jena, Range Officer, Pithabata, Ghanashyam Singh, Dy. Ranger, I/C R.O. Jenabil, Shisir Kumar Behera, Forester, Subash Ch. Sahu, Forester, Manoj Kumar Mohanta, Forest Guard, Nuagaon, Amit Kumar Nayak, Forest Guard and Chandrabhanu Behara, Forest Guard.
27.02.2016 to 04.03.2016	Satpura National Park, Madhya Pradesh.	Kirti Ranjan Parida, OFS-I(JB), ACF, STR, Truptirekha Kar, Research Fellow, Mathy Hansdah, Forester, Baiju Majhi, Forester, Ganeswari Singh, Forest Guard, Rasmita Kar, Forest Guard, Priyalata Tipiria, Forest Guard, Suryakanti Behera, Forest Guard and Satyanarayan Pattnaik, Forest Guard.



EXPOSURE VISIT TO SATPURA NATIONAL PARK, MADHYA PRADESH BY FRONTLINE STAFF OF STR



EXPOSURE VISIT TO SATPURA NATIONAL PARK, MADHYA PRADESH BY FRONTLINE STAFF OF STR

23. ECO DEVELOPMENT ACTIVITY.

- Archery competition organized on the eve of Sankranti among tribals to dissuade the people from “Akhand Sikar” (Mass hunting practice) in Baripada Division.
- Lac cultivation done through 35 nos. VSS and 2 nos. and water pump provided to 2 nos. VSS in Karanjia Division.
- Provided induction Chulla to the villagers of Buffer areas in Karanjia Division.
- Provided fuel efficiency Chula by Baripada Division.
- Provided solar home light system to EDC member of Udala Range.
- Distribution of 49nos sewing machine to the EDC member of buffer area of Baripada Division.
- Provided 64nos Fuel efficiency chulla to EDC member in Baripada Division.
- 2nos. D Light solar lantern provided to the member of EDC.
- Organisation of Vana Samparka Sibira awareness programme in buffer area.
- Livelihood option to local stakeholder-distribution of Paddy treasure 39nos by Rairangpur Division.
- Provision of alternate biomass and use of alternate energy sources to reduce dependent on Similipal forests-distribution of smokeless Chullah 112nos.
- Strengthening EDCs incentive for contribution to Eco-System service.-Distribution of pump set-5nos and Sewing machines 4nos by Rairangpur Division.

24. IDENTITY CARDS FOR SIMILIPAL VILLAGERS.

The process of issuing identity cards to the bonafide residents of villages in side Similipal Sanctuary has been started from the year 2014. The NGO “Sangram” has been involved in the process with cooperation of District Administration, PRI Members. The distribution of identity cards in 11 villages of Astakuanr GP and 14 villages of Barheipani GP have been completed. Identity cards are being issued to all the legitimate villagers with more than 5 years age.



The identity card will help the bonafide villagers in hassle free movement to and from outside villages and towns where they have to go for their weekly markets, medical and other works. It will also help in identifying the villagers and preventing intrusion of outside people into the sanctuary.

25. INVOLVEMENT OF NON-GOVERNMENT ORGANIZATIONS.

a. SANGRAM.

The SANGRAM has been associated in relocation of villages situated inside core, for detection of offence, intelligence collection, activation of EDCs and VSSs and capacity building of frontline staff and conflict resolution on forest related. The Similipal Tiger Reserve has involved SANGRAM in Anthrax vaccination camp and awareness programme on forest and wild conservation through street pala and socio-economic survey and preparation of identity cards for sanctuary villagers.

b. Indian Grameen Services.

The organization is associated with capacity building of EDC members of Jamuani and involving them in eco-tourism activities. The organization is also providing handholding support to the villagers of Asankudar, Jamunagarh resettlement colony relocated from core area of Similipal Tiger Reserve.

c. Wildlife Trust of India.

A Mobile Veterinary Service (MVS) Unit for care and rehabilitation of wild animals in Similipal landscape started during the year 2014 in collaboration with this organization is going on. Besides taking care of wild animals in distress the organization is involved in capacity building of forest officials and creating general awareness about conservation, issues and wild animal rescue operations.

d. Gram Vikas.

The organization is associated in a programme for empowerment of rural youth called “Youth For Environment Initiative” in the buffer area villages of Similipal.

e. TRAFFIC India.

Organised a workshop for forest officers of Baripada Circle on Strengthening of Wildlife Enforcement and Conservation in India.

26. RESEARCH ACTIVITIES.

- Continuous survey on composition and growth of grass species present in meadows.
- Studies on palatable & non-palatable species in important meadows.
- Mapping of all meadows through GPS.
- Research Publications-

SL NO	TOPIC	JOURNALS/ PUBLISHERS	AUTHORS
1	Status study of elephant in Karanjia Division, Odisha	International journal of pure & applied zoology, vol-3.	S. R. Mishra & H. K. Bisht
2	Study on human-elephant conflict in Baripada division, Mayurbhanj, Odisha.	Journal of wildlife Research, vol-3	S. R. Mishra & H. K. Bisht
3	Population status of Asiatic elephant in Kuldiha Wildlife Sanctuary.	Biodiversity conservation & Research	S. R. Mishra, H. K. Bisht & D. Nandi

The Annual Report has been prepared with inputs from Sri Sanjay Kumar Swain, Divisional Forest Officer Baripada, Sri Prasanna Kumar Behera, Divisional Forest Officer Karanjia, Dr. Jagyandatta Pati, Divisional Forest Officer Rairangpur, Sri Ajit Kumar Satpathy, Deputy Director, Similipal Tiger Reserve, Sri Lalatendu Senapati, Fr. STR, Sri Sandeep Ranjan Mishra, Research Fellow, STR, Dr. Truptirekha Kar, Research Fellow, STR, Sri Dharanidhara Mohakud, Guide, STR and others.



PRINCIPAL SECRETARY, F & E DEPTT., GOVT. OF ODISHA VISITED KABATGHAI REHABILITATION COLONY AT MANADA, JASHIPUR



COLLECTOR AND DISTRICT MAGISTRATE, MAYURBHANJ VISITED KABATGHAI REHABILITATION COLONY AT MANADA, JASHIPUR



FOOT PATROLLING BY ANTI-POACHING SQUAD
SIMILIPAL TIGER RESERVE



MANCHAN ANTI-POACHING CAMP, SIMILIPAL TIGER RESERVE



GABION CHECK DAM FOR WATER HARVESTING,
SIMILIPAL TIGER RESERVE



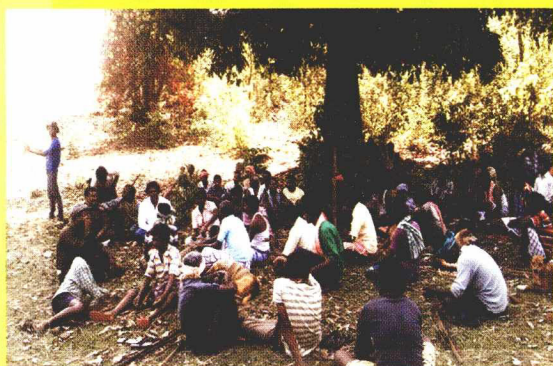
WATER BODY INSIDE SIMILIPAL TIGER RESERVE



DISTRIBUTION OF BIO-MASS CHULHA TO EDC,
KARANJIA DIVISION



MEADOW DEVELOPMENT WORK BY USING
GRASS CUTTER, SIMILIPAL TIGER RESERVE



A group of approximately ten people are seated around a large, dark wooden conference table in a meeting room. The participants, including men and women of various ages, are engaged in discussion. Several blue folders and documents are placed on the table, along with multiple clear plastic water bottles. The room has light-colored walls and a window with blinds in the background.

A photograph showing a group of men in a meeting room. In the background, a large map of the Philippines is mounted on the wall. Several men are seated around a dark wooden conference table. One man in a light blue shirt is leaning back, while others are looking towards the center of the table. A man in a white shirt is visible on the left, and another in a white shirt and cap is on the right. The room has yellow curtains on the left and a dark wooden cabinet on the right.

A group of people are seated around a large, U-shaped conference table in a meeting room. They appear to be engaged in a discussion or meeting. There are water bottles and papers on the table. A large screen is visible in the background.

A group of men are seated around a dark conference table in a meeting room. One man on the right is wearing a light-colored police uniform with a badge. The table is cluttered with papers, folders, and several plastic water bottles. In the background, there are brown curtains, a television screen, and a map of India on the wall.

COORDINATION MEETING WITH RAILWAY DEPARTMENT FOR
PREVENTION OF ELEPHANT DEATH DUE TO RAIL ACCIDENT ON 27.02.2016





4/21/2016 8:02 AM ID:101

Cuddeback
Digital

Field Director, Similipal Tiger Reserve-cum-Regional Chief Conservator of Forests, Baripada
Phone: 06792-252593, Fax : 06792-256705, E. Mail : rccfbaripada@gmail.com
Website : www.similipal.org